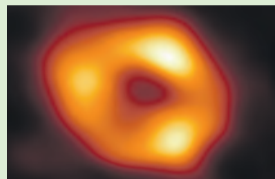




## Inside



**Chief Fire Officer seeks more firefighters. See page 6.**



**Oh no! A black hole in our Milky Way. Quickly turn to page 7.**



**Show and Shine. Page 10.**



**Bowen Crescent Playground gets revamped. Turn to page 16-17.**



**Kendra places the ball for an important kick. See page 30.**

Local news, local people, local businesses, local sport, local arts and events. Delivered free around the mountain every fortnight.



editorial@opunakecoastalnews.co.nz  
ads@opunakecoastalnews.co.nz  
accounts@opunakecoastalnews.co.nz

Phone: 06 761 7016  
23 Napier St, Opunake  
**OPUNAKE & COASTAL NEWS**

# A Royal honour for Brian

Brian Vincent was one of six people from Fire and Emergency New Zealand to recently receive their New Year's Honours Awards from the Governor-General Dame Cindy Kiro.

Fire and Emergency Board Chair, Rebecca Keogh says, "These honours reflect the commitment and hard mahi the recipients have put into their communities and our organisation. They make our communities safer, stronger, and more resilient; and we couldn't be prouder of them."

"I believe I can speak on behalf of everyone in Aotearoa when I thank them for their commitment to keeping New Zealanders safe. Congratulations on receiving such a well-deserved honour."

Brian Vincent received his Queen's Service Medal (QSM) for services to Fire and Emergency New Zealand and the community.

Brian Vincent is a member of the Opunake Volunteer Fire Brigade and has been a volunteer firefighter for 61 years. Brian remains active in a brigade support role. He is one of Fire and Emergency's longest serving volunteers.

Brian attained the rank of senior firefighter and was a representative on the Taranaki Provincial



**Brian Vincent received his Queen's Service Medal from the Governor-General Dame Cindy Kiro.**

Fire Brigade Association and a United Fire Brigades Association (UFBA) delegate.

The knowledge he gained from his involvement with the Opunake water scheme, from laying pipes to maintaining them, has been an invaluable asset to the brigade.

Brian has been involved

with Opunake RSA for many years and is currently president. He was an elected member of Egmont Plains Community Board from 2007 to 2019 and continues as an advisor. He has been a member of the local community transport group since 2015, volunteering his time to transport people to hospital and

other appointments in New Plymouth 50 kilometres away. He has been a member of the Opunake Lions Club since 1989, helping with numerous community projects.

Brian is also a member of the Opunake Civil Defence committee, and he works with the Department of Corrections to coordinate and

oversee tasks for community service workers. He has been on the committee of the community-owned and operated cinema, fundraising for refurbishment of the cinema and volunteering in front-of-house roles. Brian also volunteers with the Cape Egmont Lighthouse and Museum as a guide for visitors.

# Emissions plan will impose unjustifiable costs

New Zealand's energy sector is committed to climate action and working constructively with the Government to help it achieve net zero emissions by 2050, but disagrees with the approach outlined in the Emissions Reduction Plan says John Carnegie, Chief Executive of Energy Resources Aotearoa.

"This plan is a poor piece of public policy. It will make it much more expensive for New Zealand to attain its net zero emissions target by 2050.

"The Government's Emissions Reduction Plan will impose enormous complexity on the energy sector and broader economy, while forcing consumers to pay more at a time when they can least afford it.

"Greater pay for bus drivers might be high on the Government's list of priorities, but such a policy is completely divorced from the goal of reducing emissions. The Government needs to be held accountable for its spending, rather than shoehorning in all sorts of policies under the guise of climate change.

"The Government has decided in some cases when businesses and households must act and what their choices should be. That will lead to higher costs.

"The climate does not care whether it costs \$30 or \$300 to prevent a tonne of CO2 equivalent from being emitted to the atmosphere - but consumers, businesses and households do. By trying to pick where emissions should be reduced, at

which rate and when, will impose unnecessary and unjustifiable costs upon Kiwi businesses and households," says Carnegie.

Carnegie says that the Emissions Trading Scheme remains the best tool at the Government's disposal to reduce emissions. Given the total amount of emissions is capped under the ETS, the burden of proof for any policy that will operate under the cap is even higher.

"A simple solution is best when it comes to a complex problem like emissions reduction. The ETS sends simple price signals to everybody in the economy and is doing the heavy lifting to bring net emissions down.

"The complexity of the Emissions Reduction Plan, including the vast number of strategies and plans,

means energy producers, distributors and consumers are going to struggle to identify clear signals to inform their decision-making. This complexity will likely lead to higher

costs.

"I encourage policymakers to engage closely with our members to identify credible, low-cost decarbonisation options."

**ELTHAM BUILDING SUPPLIES**

*Cabinet Making, Glass Supplies & Custom Joinery Solutions*

**Donald & Ian Murray**

06 764 8616 027 242 8379  
027 348 9445

136 High Street, Eltham  
eltham.bs@gmail.com  
www.elthambuildingsupplies.co.nz



# Letters to the Editor

Send your your views to:  
Letters to the Editor  
23 Napier Street, Opunake.  
Fax: (06) 761 7016

email: [editorial@opunakecoastalnews.co.nz](mailto:editorial@opunakecoastalnews.co.nz)  
You are welcome to use a pseudonym but must supply your name and address to us.

**"Let's create your business growth strategy together"**  
Your only local community accounting firm



**HUGHSON & ASSOCIATES**  
Accounting for the future, today  
Hawera - Opunake - Patea - 06 278 4169  
Opunake Office hours:  
Mon, Wed & Thurs: 9am-3pm

## RENTAL VEHICLES



- CHARTER BUSES
- VANS
- TOUR BUSES

### ALUMINIUM SCAFFOLDING FOR HIRE

\$35 per day, \$50 weekend.

More than 6 days \$30 per day.

### WATERBLASTER FOR HIRE

Petrol 3000 psi 15L/minC

Cost: Half day \$90, Full day \$120, Weekend \$130. Friday after 3pm return Monday 9am.

Bond for waterblaster and scaffolding \$50.

For more information contact Tracey or Christine at

## PICKERING MOTORS

11 TENNYSON ST OPUNAKE PH (06) 761-8363  
0800 22 11 20 Email: [pickering.motors@xtra.co.nz](mailto:pickering.motors@xtra.co.nz)

# OPUNAKE & COASTAL NEWS

Registered office: 23 Napier Street, PO Box 74, Opunake

Phone: Office (06) 761-7016, A/h (06) 761-8206

For advertising, email: [ads@opunakecoastalnews.co.nz](mailto:ads@opunakecoastalnews.co.nz)

For editorial, email: [editorial@opunakecoastalnews.co.nz](mailto:editorial@opunakecoastalnews.co.nz)

For accounts, email: [accounts@opunakecoastalnews.co.nz](mailto:accounts@opunakecoastalnews.co.nz)

[www.opunakecoastalnews.co.nz](http://www.opunakecoastalnews.co.nz)

Editor: Bernice McKellar

Journalists/Sales: Rolland McKellar, Bryan Kirk

Advertising/Production: Vanessa Smith

Production/IT: Shane Butler

Delivery: Thursday, fortnightly

Registered as a newspaper.

Member of the Community Newspapers Association of New Zealand



The Opunake and Coastal News is distributed free to every home and business within the rural area bounded in the north by the New Plymouth city border, extending east to Egmont Village, and around to the edge of Stratford, south to the Hawera city border and inland to Kaponga and through Eltham.

*While we welcome free speech, the views expressed in the Letters to the Editor do not necessarily reflect those of the Opunake & Coastal News. Please limit letters to 350 words as we sometimes struggle for space to fit them all in.*

## People have rights

After reading Awatuna's Max Thomas' letter I was very confused, simply because he jumped from one subject to another.

He stated about human rights. Well we do have it

in our country, plus freedom of speech, opinions, ideas and suggestions, yet if he actually lived in Russia and spoke up against their communist government he'd be in prison pretty quickly, and as for abuse, this is one of many worldwide problems we have in today's world, and it's been occurring most

of the time.

Now all politicians, regardless of their parties' affiliations will always quote their parties' policies many upon many times to us the general public especially before any general election, plus our lady PM didn't state anything about those protesters who flooded on to Parliament grounds as most of them were only there to cause trouble or to just make up the numbers, but they never achieved anything at all, as I'd call them ragheads.

Mr Thomas, it seems you're a fan of Facebook. Well, my good friend, I do feel very sorry for you as all that information you seemed to get is only trash, put on there by scaremongers who really don't know very much themselves, so don't believe what you read on Facebook. I wish you well in the future.

Tom Stephens  
New Plymouth

More letters on page 4.

## Correction and apology

In the April 21 2022 edition of the Opunake & Coastal News, there was a Letter to the Editor entitled 'Doctor's House,' that had incorrect details.

The Gunatunga family never lived in the house referred to though their children were very friendly with the owner, which is how their photograph came to be found there.

Also the late Dr Gunatunga and his wife came to New Zealand from Sri Lanka.

We and the writer apologise to the Gunatunga family for these inaccuracies.

Editor

## ADELPHOS

Have you ever had a broken relationship with a family member or friend? Not all relationships last a lifetime. Different or changing values and attitudes often result in relationship shipwrecks. Jesus prophetically cautioned us that many will fall away from their relationship with God, for a variety of reasons. He summarised most of these under the general four categories in the Parable of the Sower (Matthew 13). Only one of the four groups who heard the gospel would be saved. Staying right and keeping right with God can be challenging!

But what causes a falling away from our faith in an open and honest relationship with God? The group I am

## Staying and keeping right with God

focusing on today are those people who have lost their faith due to the worries and cares of the world. Here's just a few reasons. You may have experienced some of these universal heartbreakers. I have. Spiritual laziness, the death of a child, grandchild or spouse. Then there's sexual abuse, catching Covid, a miscarriage, abortion, financial stress or losing a livelihood. What about mental illness, drug/alcohol abuse, parents who emotionally or physically neglected/abused you, a family suicide, bankruptcy and nowadays weakening under societal pressure to "conform" to the new morality, rather than permitting God to "transform" us with biblical

kingdom standards. The list is endless as life is full of change and heartbreaks; once professed believers have found many reasons to cut off their relationship with God due to them. Staying and keeping right with God is challenging: thankfully, it is not impossible.

God is always waiting to forgive us if we confess (tell Him) the reasons why we have not been having a right relationship with Him and ask for His forgiveness, through Jesus. Along with that we need a desire to want to stay right with Him. Today God is calling people to be strong and sanctified by a close relationship with Him in prayer, praise, Bible reading, good works (Matthew 25) and repentance. 1 John 1:8-

9 tells us that the believer in Jesus needs a daily spiritual shower of confessing any sins (especially secret ones no one else knows about). And to ask for forgiveness through Jesus' Good Friday love sacrifice and resurrection hope.

That's what staying close and keeping right with God means in our 2022 slippery slope world. Kia kaha and stay strong or think about choosing to get right with a loving and supportive God. His/Her heart will accept everyone who calls upon the name of the Lord Jesus (Romans 10:13). No reira, kia kaha, kia kaha and kia kaha.

Peace,

Adelphos

FOR THE SUPERMARKET IT'S  
**FOOD**  
FOR THE GARAGE IT'S  
**PETROL**  
FOR THE HARDWARE STORE IT'S  
**TOOLS**  
**PUBLICITY**  
**IS OUR BUSINESS**  
**THIS IS WHAT WE SELL!**

No one would expect any of the above businesses to give their services free. We hope you understand that we shouldn't be expected to do likewise.



**OPUNAKE & COASTAL NEWS**

## More Opunake & Coastal News' out

We have printed more copies of the Opunake & Coastal News.

It is available on stands at the following locations

### New Plymouth:

Ate Forty One, Tukapa St, Westown

Challenge Spotswood

The Health Shop on the ground floor at Centre City

The Store, Cnr Tukapa St & Wallath Rd

### Waitara:

Outside the North Taranaki Community House Trust, 67 McLean St

### Inglewood:

Inglewood Book Centre, 31 Rata St

### Stratford:

Stratford Knit & Sew, 202 Broadway

First National, Stratford.

### Eltham:

Eltham Four Square

### Hawera:

Outside First National, Cnr of Victoria and High Streets

Outside Nursery Rhyme, 158 High St

Papers are also available at

The Sunshine Dairy, Hawera

The Normanby Dairy

Swetes Dairy, Manaia

Pastimes in Opunake

Tim's Barbershop, Moturoa

Okato Takeaways



# FLU 2022

## Protect yourself and your whānau this winter

With Aotearoa's borders re-open, there's a much bigger chance of catching the flu this winter. Getting a flu jab is your best defence and it's FREE if you're:



- Aged 65 and over
- Māori or Pasifika aged 55 and over
- Pregnant

Letters to Editor, continued

## Work over for the season?

Just a thought, it looks like two upgrade section contract sections on the Pouakai/Taranaki Crossing Trek out of the five let to contractors will be finished this summer season along with the two last season which will leave the sections from Jacobs Ladder

on the Holly Hut Track to the Kokowai Track Junction and from the Kokowai Track Junction to Holly Hut to be completed. The Auckland contractors were ordered off the Egmont National Park by the Department of Conservation and Worksafe after they had a digger roll off the track in January to await the OSH report.

Last week the Auckland contractor staff were allowed back to clear out their track

work items. Although DoC have not stated anything it looks like it is all over for the season.

Here is a photo of Beck Helicopter removing one of the diggers.

Ian McAlpine  
New Plymouth



**RIGHT:**  
A helicopter removes a digger which rolled off the track earlier this year.

Americas Cup you have to win it again. To me Grant Dalton should put together a New Zealand Americas Cup committee, then set about the task of talking to big sponsors and/or the rich and famous instead of doing everything himself, and if he'd done it with this committee I do believe Auckland City could once again host the Americas Cup regatta.

Now this is how the Melbourne Cup is organised, as there's a special racing committee set up for years, and after this 3000 metres (two miles) is set up. This committee begins to accept many racehorses from overseas, then it's this committee which selects the best 24 horses to again contest the Melbourne Cup, then the process starts again.

I myself follow many different sporting codes. Also I have my favourite overseas sporting teams, but we have all got to realise that we have some of the best yachtsmen and women in the world today, so I do believe that Grant Dalton made a big mistake by not having a committee behind him.

Tom Stephens  
New Plymouth

**4U Computer Solutions**  
Affordable | Dependable | Professional  
If experience and service is important to you, then 4U Computer Solutions is the service provider for you.

<b>Services</b>	• Managed Services • Hardware & Software • Phone Systems • Test & Tag • Backup Solutions • Support	<b>We Service</b>	Hawera Eltham Stratford Patea Waverley Manaia Opunake Kaponga
-----------------	---	-------------------	--

Call Us: 0800 48 2667 or 06 278 1224 365 Ketemarae Road, Rd15, Hawera 4675  
www.4ucomputersolutions.co.nz

**Simple But Significant**  
a simple cremation & burials

Helping Taranaki families with a range of simple, professional funeral services. With affordable caskets, urns & jewellery.

0800 236 236 233 Carrington St  
www.asimplecremation.co.nz New Plymouth

You can rely on us for your energy needs  
www.rockgastaranaki.co.nz

Transform your home - all your hot water, space heating and cooking needs from your trusted local Rockgas supplier.  
Count on us - reliable delivery of 45kg LPG cylinders to your home, business, or farm where ever you live.

Locally operated and proud to be part of your community  
rockgas TARANAKI

Call Rockgas Taranaki  
0800 LPG 2 YOU or 06 757 9264

## Anzac Day Manaia

I wish to express my disappointment about the 2022 dawn service Anzac Day Ceremony held in Manaia, specifically the indulgent speech given by the minister of the church that was in attendance, Rev Phillip Woodmas. In his speech he made reference to fearmongering by the New Zealand Government and media, as well as using the platform to convert us all to Christianity and the following of God as the only real solution to the current global state (referring to Covid 19 and the war in

Ukraine). I find it disgusting and despicable that any person would use the Anzac Day ceremony to push his own opinions and agenda onto the public. It is well within his right to have an opinion, and I respect that each individual has differing opinions, something which perhaps the minister needs a lesson in, but there is a time and a place to voice these, and it certainly isn't at an Anzac Day ceremony.

Anzac Day means different things to different people, some people having experienced war within families, friends or first hand, and I see the minister's words, and the fact that he brought these to an Anzac Day ceremony, as a total lack of respect for every

individual that lives under the freedom that the Anzacs, and all of those who have been unfortunate enough to be touched by war, have fought for.

YB  
Manaia

## America's Cup

I can really understand where Mr McKellar is coming from about us taxpayers having to fund the last Americas Cup costing \$136 million dollars here in Auckland. Now it's going to take place in Barcelona, Spain, but I do hope we can host the Americas Cup again.

To bring home the

# Bill ends high country farming as we know it, says National

The Labour Government has concluded its campaign to end generations of thoughtful stewardship of the South Island's high country, National's spokesperson for Land Information Nicola Grigg says.

"The Crown Pastoral Land Reform Bill effectively ends a decades-old relationship between the Crown and high country pastoral leaseholders.

"The Bill states its purpose as 'maintaining or enhancing

inherent values across the Crown pastoral estate', and it will, instead, have the opposite effect.

"These leaseholders have been effective custodians of this land for generations, but the Government will now impose a punitive regime devoid of any knowledge of practical implementation and will see environmental outcomes worsen rather than improve.

"It introduces an adversarial system of management with rigid

rules and complex processes which will increase costs and undermine any motivation to look after the land.

"The Bill removes the ability for leaseholders to make operational decisions about farm management to enhance the environment - farmers will now need consent to clear weeds including gorse, broom or wilding pines.

"Nor will leaseholders be able to maintain roads and tracks that aren't on the LINZ register - given some of

these farms were developed by settlers a century ago, this is an absolute nonsense.

"National believes the best approach to ensuring ongoing enhancement of the high country would be by using legally binding farm environmental plans, created in partnership between DOC, Land Information NZ and the leaseholders.

"National would repeal the changes this Bill makes in its next term of government."

## On this month in history Tchaikovsky born

On May 7, 1840 Peter Ilich Tchaikovsky was born in Votkinsk, Russia.

He took piano lessons at age five and could read music from an early age.

Later he studied

Composition with Anton Rubinstein.

He wrote music in various forms such as opera (eg Evgeny Onegin), orchestral, piano eg 1812 Overture, First

Piano Concerto, Romeo & Juliet Overture-Fantasy and ballet eg Sleeping Beauty, the Nutcracker and Swan Lake.

In October 1893 he

conducted the premiere of his Sixth Symphony (the Pathetiques, but died nine days later.

**CRAWFORD AGRITECH Ltd**

- TRACTOR & MACHINERY SERVICE & REPAIRS
- ON FARM SERVICING
- AIR CONDITIONING SERVICE, REPAIRS AND HOSE MAKING
- SPARE PARTS & FARM OILS
- IMPLEMENTS & ATTACHMENTS - SALES AND SERVICE
- FACTORY TRAINED TECHNICIAN
- TARANAKI & WANGANUI INDEPENDENT FERGIE TRACTOR SPECIALISTS

Ph 06 762 8023  
Ian Crawford  
Mob 0272 207 701

MASSEY FERGUSON | FORD | SAME | LANDINI | ISEKI | VALTRA | MATBRO  
INTERNATIONAL | MERLO | DAVID BROWN | RENAULT | URSUS | JOHN DEERE

**MORRIS LUBRICANTS**  
the winning formula since 1869

**SHOE & BOOT SALE**

by SCARPAS David Deacon

New selection of men's shoes

Also SHOE, BAG & LEATHER REPAIRS

244 Broadway - STRATFORD  
Ph (06) 765 5591 - Fax (06) 765 5594

COUNCILLORS COMMENT

# Reflecting on three years



CR AARUN LANGTON

thought it was a good time to reflect on the last three years of being one of your council representatives.

The Council has been involved in many projects in our area and it is good to see some of them coming to fruition. First up, in Rahotu, Gregory Road was tar sealed last year and Bayly Road is currently being upgraded. The Rahotu community have expressed concerns regarding the flooding in their township in February, so the Council is presently in communication with them to develop initiatives to manage such impacts in the future. In regards to the floods, the Regional Council is now

reviewing riparian planting and the possible effects it has had on the flooding. It will be interesting to see the outcomes from this investigation and I hope that all concerned parties are involved in the recommendations.

Late last month, the footpath in front of Te Kōhanga Reo o Te Namu on Tasman Street was completed. This now means that there are footpaths on both sides of our main street and will allow a clean and safe passage for our tamariki.

This week in Opunake the Bowen Crescent

playground was reopened. It is exciting to see that our young people will have an upgraded playground to use. A small group of the local community worked tirelessly to fundraise enough to get this project over the line - a big thanks to those people.

The February floods caused some undermining damage to a few of the trees around the Opunake lake. The Council has removed these trees to tidy this area up.

As this could be my last councillor's report, I'd like

to take this opportunity to thank everyone that has supported me in taking up this position. My term has been an educational experience and I have thoroughly enjoyed working with many innovative people in our community.

Kia mahana te takurua ki a koutou katoa.

Aarun Langton  
South Taranaki District Councillor  
Taranaki Coastal Ward

Kia ora from Texas, I am currently in San Antonio, en route to Laredo. The first few days in Texas have been dominated by finding the tourist spots, navigating up to 16 lane highways, coping with the heat and the crowds of people about. This week we will be attending our daughter's graduation from her college in America.

A Manaia golfer, Ethan Jones will be graduating from West Georgia University. He has been studying there on a golf scholarship. His brother Sam will be returning to America at the start of June to test himself against the

top amateurs there. Sam has been in good form as of late, winning the New Zealand Stroke Play Championship and the Auckland Stroke Play. Best of luck Sam with your upcoming travels.

With the local body elections in October, I

## STDC proposes 2.84% average rate increase

The South Taranaki District Council (STDC) is proposing one of the lowest rates increases in the country according to its 2022-23 draft Annual Plan.

The Plan, being released for public feedback is proposing an average rate increase of 2.84%, below the current 6.9% rate of inflation, and lower than the 4.68% originally projected in its 2021-31 Long Term Plan.

South Taranaki Mayor Phil Nixon says he is very pleased the Council has been able to reduce the projected rate increase, although the effect on individual properties will vary due to the recent District property revaluation, which saw substantial increases in the value of residential and commercial properties.

"Since its last valuation three years ago, the district has had an average increase in property value of 20.4%. This was largely driven by significant increases in the residential and commercial

sectors - while dairy and pastoral properties saw a small decrease."

If your property's valuation increased more than the district average increase (20.4%) you will pay more than the 2.84% rate increase. Consequently, if your property's capital value did not increase as much as the district's average movement then your rates will not increase as much as indicated and may even decrease," says Mayor Nixon.

"Our Council is always conscious of the need to keep any rate increases to an affordable level, and we were particularly focussed on minimising any impact the new property values may have on ratepayers without compromising future plans or our overall financial position," he says.

Mayor Nixon says the Council's focus for the 2022-23 year continues to be on undertaking activities that encourage sustainable,

prosperous and vibrant communities.

"We are doing that with projects such as the district business park, construction of Te Ramanui o Ruapūtahanga, development of town centre revitalisation upgrades for Eltham, Waverley, Manaia, Pātea and Ōpunakē, implementation of Council's Environment and Sustainability Strategy and completion of the Nukumaru Station Road extension south of Waverley. While at the same time continuing extensive upgrades and improvements to our road, water and wastewater infrastructure."

Other notable projects that the Council will work on in 2022/2023 include: building a new reservoir at Waimate West, earthquake strengthening and upgrading the Eltham Town Hall, undertaking water pressure improvements in Pātea, establishment of a business enterprise

hub and co-working space and progressing work on a new community facility in Manaia.

Feedback on the Plan can be submitted until Friday 20 May.

**Viv Scott**  
027 441 4596  
viv.scott@eieio.co.nz

**Tara Gibson**  
027 766 4456  
tara.gibson@eieio.co.nz

**McDonald REAL ESTATE**  
Your Local Team in Real Estate  
www.eieio.co.nz

## OPUNAKE LAWYERS

# Thomson O'Neil & Co.

*Our Opunake Office is attended by:*

**Robert England on Wednesday & Fridays**  
for buying and selling houses, farms & businesses; Trusts, Wills and Estates.

**Mark Utting on Thursdays**  
for buying and selling houses, farms & businesses; Trusts, Wills, Estates and refinancing matters.

**FOR ALL YOUR LEGAL REQUIREMENTS**  
**30 TASMAN ST, OPUNAKE**  
**PH: 761 8823**

**SEND US YOUR SPORTS STORIES AND PHOTOS!**

**OPUNAKE & COASTAL NEWS**

Promote your business or event in our area, call us on:

Ph/Fax: 06 761 7016 - 23 Napier Street, Opunake or e-mail us: ads@opunakecoastalnews.co.nz

67 Breakwater Rd (up Norma's Way) • NEW PLYMOUTH • PHONE 06 751 5065  
FAX: 06 751 5085 • WWW.NEWTONGORDGE.CO.NZ

**ALL DOMESTIC & COMMERCIAL JOINERY**

**Newton Gordge JOINERY**

• Kitchens • Stairways • Vanities • Lounge Units • Bench Tops • And More

<p><b>2018 Hyundai Santa Fe DM</b> 2.2D 7S, Diesel, Auto \$27,990</p>	<p><b>2016 Holden Colorado LT DC PU</b> 2.8D/6AT/UT \$29,990</p>	<p><b>2008 Suzuki Escudo Salomon 2.4</b> 4x4, Petrol, Auto \$11,990</p>	<p><b>2007 Toyota Estima 4WD</b> Hybrid G \$12,990</p>	<p><b>2015 Mazda 6 2.2 6 SPD</b> Auto Wgn \$15,990</p>
---	--	---	--	--

# FISHER TRANSPORT

Division of Fisher Mechanical Services Ltd

Bulk Haulage Specialist / Metal cartage  
Palm kernel delivery / Race fines / Earthmoving

JADE FISHER  
021 478 700  
jade@fishermechanical.co.nz

12 Arthur Road  
Paraite, Taranaki  
4373 New Zealand

**WANT TO MAKE THE MORE OF THE OUTDOORS?**

**Garden Art** personalised for your space or the perfect gift. Call or email Mel.

**Coastal Welders**  
027 255 8677  
06 752 8138

## OPUNAKE FIRE SERVICE

# New Chief Fire Officer seeks more firefighters

Opunake Volunteer Fire Brigade's new Chief Fire Officer, Andrew Pentelow is calling for more volunteers to join the brigade.

"We have a great bunch of people in our brigade who are doing a great job keeping our community safe," Andrew says. "We'd love to welcome more to the team." At present Opunake Volunteer Fire Brigade has a team of 12 operational firefighters, including Andrew's wife Suzie and son Ben, six involved with operational support, such as traffic control and lighting. "Volunteering for the fire brigade is for everybody," Andrew says. "Everyone brings different skills to the table, and here at Fire and Emergency New Zealand we welcome diversity."

The second recruitment drive is planned later in the year, and Andrew is hoping it will persuade more people from the Opunake community to put their hands up. Being a firefighter requires flexibility and adapting to change, and with seventeen years under his belt, Andrew has dealt with a variety of callouts. "Last year it was not car accidents so much, but more likely to be medical incidents. This year it has been the other way round, as well as lots of scrub fires. Not one day in the life of a



Chief Fire Officer (CFO) Andrew Pentelow at the Opunake Volunteer Fire Station.

firefighter is ever the same," he says. Andrew is grateful to local businesses who are most understanding when firefighters need to leave to attend a callout and maybe even save lives. He also acknowledged the local community, "We have a strong Opunake community who support us and each other as shown during the recent floods." Andrew is keen to mark the important role of his volunteers' partners and families. "Nobody could

do this job without the great support of their families." Andrew started in March this year, replacing Chief Fire Officer, Craig Dingle. "It's been busy with Covid and all the rules can be testing at times, as well as keeping our members safe, but the brigade has been incredibly supportive of me starting my new role," he says. Andrew, a dairy farmer, leads a busy life, as he is also a member of Opunake Lions on the Oaonui Hall Committee and two motor

bike club committees. He says that despite the rewarding lifestyle of being a volunteer firefighter, it's also important to make time for hobbies. "I use my spare time to get out on my motorbike, and I am part of both the Ulysses Motorbike Club and the firefighter-only Red Knights Motorbike Club," Andrew says.

Please phone Andrew on 027 417 3319 if interested in volunteering, or if you need more information.

## CENTRAL ENGINEERING TARANAKI

- Design / Consultation
- Diesel Mechanical Repairs
- Quotation / Estimation
- General Engineering
- Fabrication / Installation
- Taranaki wide
- Mechanical Engineering

**Shaun Cadman**

14 Castle Street, Eltham | 027 645 0162  
centraleng2018@gmail.com



CHECK OUT OUR WEBSITE:

[www.andersonspies.co.nz](http://www.andersonspies.co.nz)

**OPENING HOURS**

**MON TO FRIDAY 6am - 4pm**

PH 06 278 5553

sales@andersonspies.co.nz

144 Princes St  
HAWERA

"best you can buy  
an Andersons pie"

## Motorbike riders risk tragedy on shared pathways

A former Taranaki family wants locals to avoid their personal tragedy and keep motorbikes off New Plymouth District Council walkways and out of parks. There have been 14 complaints of motorbikes

on public walkways in the last six months across the District, which comes with a stark warning from Greg and Stacey Woollaston. A little more than two years ago their son lost his life when he was hit by a

motorcycle on a Manawatu shared pathway designed for walkers and cyclists. "Because we grew up in Taranaki and we still have family living there, we're saddened to hear from them about the number of

motorbike riders who use the pathway between New Plymouth and Bell Block," Stacey wrote in an email to NPDC. "If a person gets

continued page 7

## POWERWORX

Power Supply Rural & Residential

Design, upgrade and repair overhead and underground power supplies

- Powerco Approved
- Vegetation control around powerlines
- Underbores - wires and pipes
- Network connections
- Powerline maintenance
- Transformer & line upgrades
- Fault repair
- Specialists in rural power servicing and installation
- Subdivision power installation

0800 877 746

Taranaki Region  
Contact Bruce Wilson Manager  
58 Glover Road, Hawera Ph: 06 278 4514  
Email: [powerworx@obertech.co.nz](mailto:powerworx@obertech.co.nz)

## BRIAN HILL BUILDING

- \*New homes
- \*Alterations
- \*Rotary cowsheds
- \*Herringbone dairy sheds
- \*Concrete driveways
- \*Bridges
- \*Pre-cast silage pits
- \*Hay barns & implement sheds
- \*Concrete races
- \*Repair work

We are a licensed building practitioner and Master Builders member. Experienced in the design and consent process.



0274 442 703



# Motorbike riders risk tragedy on shared pathways

*continued from page 6*

hit, they will never come off well. Learn from our experience.” NPDC Parks Manager Stuart Robertson says the situation

has been getting worse, so the police have now been asked to patrol public walkways and parks. “Complaints have come in from across the district, especially the Coastal

Walkway, Te Henui, Waitara and Pukekura Park. “Ninety-nine percent of people do what’s right – they share with care and look out for others. But a small number just do what

they want and if you do see a motorbike where it shouldn’t be, please call the police,” says Stuart. NPDC looks after 1,600 hectares of park and reserve land including Pukekura

Park. There are 82km of shared pathways in the district, including the 13.2km Coastal Walkway. Electric bikes and scooters are

allowed on shared pathways but only authorised motor vehicles, such as emergency services, are permitted.



The dangers of shared pathways cannot be over-estimated.

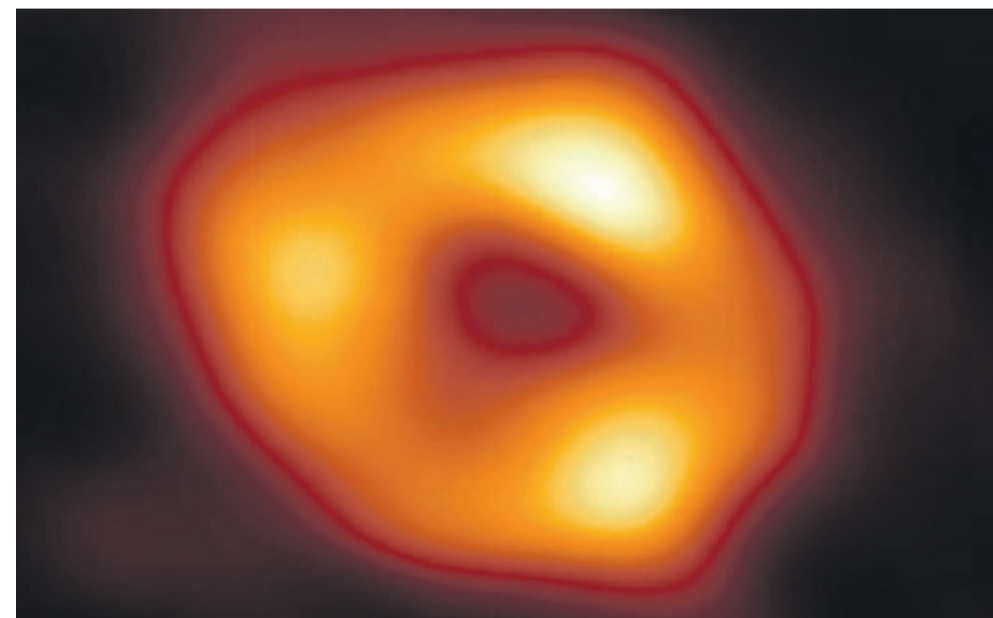
# Our Milky Way monster

Astronomers have captured the first image of the supermassive black hole at the heart of our galaxy. The Event Horizon Telescope collaboration has taken this stunning image of Sagittarius A\*, the black hole at the centre of the

Milky Way. To get an image of the black hole, the team combined a network of eight widely spaced radio antennas to mimic a telescope the size of our planet. University of Canterbury Distinguished Professor Roy

Kerr explained what exactly is in the image. “We can’t see the actual black hole because black holes are black - nothing is coming out of the hole itself. What we’re seeing is the accretion disk around it.” The image poses new

questions for scientists to answer, said University of Auckland Associate Professor Jan Eldridge. “The spin of the black hole is not the same as the spin of all the stars in the galaxy which is really weird, because that tells you something that in the past in our galaxy there may have been a big collision.” She said it was a big day for science. We have had these hints that yes, there is a massive black hole at the centre of the galaxy, but the fact is that we have actually got an image and it’s there.”



A massive black hole. photo: European Southern Observatory.

*Taranaki's Main St.*

Winter hours:  
5.30am-8.30pm

Hawera, Opunake, Rahoitu, Pungarehu, OAKURA NP

**QUICK AND EASY!**  
LPG Swappa bottles now available.

We also do WOFs

**HEYDON PRIEST LTD**  
OAKURA

Route 45 - Taranaki's Main Street  
Oakura | Ph: 06 752 7753

**WALSH AGRIMEC**  
TYRES & SERVICE

Phone 06 761 8999—027 256 8083

**Opunake's Biggest Range of Tyres**

Come in and see us for a quote. We also stock a big range of batteries & automotive accessories.

38 Ihaia Road, Opunake

Email: [accounts@agrimec.co.nz](mailto:accounts@agrimec.co.nz)

**Enjoy Life!**

Let us take care of the rest.

**SOUTH TARANAKI FUNERAL SERVICES**  
Ph: 06 2788 088 - 24hrs

**Taranaki's hearing care specialists are open and hear for you!**

100% Taranaki owned & operated since 1998

At Central Audiology, we are doing everything possible to ensure that our clinics are safe for you. As locals, we really care about our community.

Our services:

- Hearing assessments
- Tinnitus
- Hearing aids
- Wax removal (microsuction)

**CALL US: 0800 751 000**

Stratford c/o Avon Medical Centre  
Hawera cnr Victoria & High St  
New Plymouth 20 Robe St

**Central Audiology**  
TARANAKI

# Welcoming baby Flynn

One month ago Rob, Scarlett and I became a family of four when we welcomed Flynn into the world.

We had a bit of a bumpy start and had to spend some time in the Neonatal ICU in Wellington.

However, Flynn is doing much better now and we are back home. Scarlett is over the moon to be a big sister and adores her little brother.

I want to thank my amazing midwife for her support, the doctors, nurses and SCBU team who helped look after



**STEPH LEWIS**  
MP FOR WHANGANUI

me and Flynn in Whanganui Hospital, the Life Flight team who flew our wee boy to Wellington, the doctors and nurses in NICU, and the



**Scarlett, Steph and baby Flynn.**

friendly team at Ronald McDonald House.

I also want to thank our families who looked after Scarlett for us. It really does take a village, and we are so grateful for the support of family and friends over the last few weeks.

It was far from the start we imagined, but we love having Flynn in our lives, even if we are up every couple of hours during the night for feeding at the

moment.

I'm going to take a few more weeks to spend with my family and to recover before diving back into work. In the meantime my awesome team are available to help in the Whanganui and Hāwera Offices and some of my Labour caucus colleagues will be helping out.

*Steph Lewis*  
MP Whanganui

## In the firing line

Taranaki King Country MP Barbara Kuriger says the Government's proposed new Arms Regulations

are a targeted attack on legitimate individuals and groups within our society.

"The new proposals are among the second set of gun law changes Labour intends bringing in, as its response to 2019's attack by a lone shooter, on two Christchurch mosques. But the amendments, despite this guise, have a much wider reach," she says.

"They will instead, prevent or make it harder for law-abiding citizens to use firearms in a controlled environment like a shooting range. Firearms users go to these places to learn and/or enjoy the sport of target, rifle or pistol shooting.

"Experts are available to teach people how to use firearms safely, allow people to use firearms without the need to own one or a gun safe and assist them in obtaining a firearms licence. They also assist parents by providing



**BARBARA KURIGER, MP FOR**  
TARANAKI-KING COUNTRY

a stricter hand in instructing their children. Moreover the proposals will threaten the

very existence of clubs and ranges with added layers of red tape. This includes a new certification system (at a proposed cost of \$830 per inspection), and force clubs to become incorporated societies and mandate that all office holders hold a firearms licence., many of whom have retired from needing one, but volunteer to maintain the books and keep the admin in order.

"Despite the removal of 10,000 guns via the gun buyback scheme — almost all from licensed honest citizens — there has been no reduction in firearm-related offences. In fact, quite the opposite.

"The Government is not focused on what we believe

is the sole objective — to get firearms out of the hands of those who intend to use them to do harm. And that should be the aim of any firearms legislation.

"Naturally, I've had several people contact me on this issue to discuss the submissions they were making before last week's May 4 close-off date.

"Administrators of clubs and ranges feel the Government is using the proposals as a way of getting rid of them altogether.

"While no-one disagrees with the need to keep a tight system on firearms licensing and their use in this country, the method leaves a lot to be desired.

"The Government has firmly set its sights on the way gun clubs and ranges have operated for decades in this country.

"Bringing in huge cost and complexity for them is not how you solve the rapidly rising use of guns by gangs and criminals. Nor does it provide greater public safety."

Barbara Kuriger sees she would prefer to see firearms prohibition orders that would give police warrantless search powers to go after illegal users with illicit firearms.

*Barbara Kuriger MP for*  
Taranaki-King Country.

## Post-Budget Presentation

**Friday 27 May | Morning Tea**

Please call **06 757 5662** to RSVP by 25 May

Hon Grant Robertson, MP for Wellington Central and Glen Bennett, MP for New Plymouth, invite the not-for-profit sector for a post-Budget presentation.



Funded by the Parliamentary Service. Authorised by Grant Robertson, Parliament Buildings, Wellington.

## On this month in history the 2004 hikoi sets off

On May 5, 2004 the Hikoi (Korero taiao) set off to march 1500km to Parliament in Wellington. About 15,000 people took part representing 42 tribes. They were protesting about the

Foreshore and Seabed Act and wanted the Treaty of Waitangi claims to the seashore and beaches upheld. Prime Minister at the time the Rt Hon Helen Clark called them "haters and wreckers"

and refused to meet them when they reached Parliament.

Deputy Prime Minister Michael Cullen (later Sir) met them, on her behalf, as did other parliamentarians.

## Barbara Kuriger MP for Taranaki-King Country Backing Rural and Provincial New Zealand

### Inglewood Office

80 Rata St, PO Box 124,  
Inglewood 4330 • 06 756 6032  
Kuriger.Inglewood@parliament.govt.nz

### Te Awamutu Office

53 Mutu St, PO Box 302,  
Te Awamutu 3800 • 07 870 1005  
Kuriger.Teawamutu@parliament.govt.nz

### King Country Virtual Office

021 856 793  
Kuriger.Kingcountry@parliament.govt.nz



Authorised by Barbara Kuriger MP, Parliament Buildings, Wgtn.





# Mystery of missing Taranaki man solved

A metal cap badge in a German field has helped solve the mystery of a 25-year-old Taranaki pilot who went missing nearly 80 years ago.

The bent and buckled Royal New Zealand Air Force badge, belonging to Flight Sergeant Edward "Ted" Wright Saywell, also known as "Boy", was found by a team of Dutch enthusiasts, using metal detectors to track down crashed Second World War planes.

Edward, born at Manaia, was the only son of Margaret and Raymond Saywell and, if he had survived the war, he was due to inherit the family farm at Uruti. He is believed to be the first Uruti man to join the air force. A war memorial entrance arch at Uruti's All Saints Church, as well as a bronze tablet inside the church, has him listed as one of four locals killed in the war.

The cap badge discovery came after some two decades of research led by Edward's niece, Wendy St George, who spent much of her childhood in New Plymouth with her grandparents. In *The Photo on the Wall*, a book just published by River Press, Wendy tells of overcoming seemingly impossible odds



Wendy St George with the photo of Flight Sergeant Edward Saywell, which hangs on her grandparent's wall and a copy of her book about her search for her uncle.

to try to find what happened to her uncle.

"He was never talked about," she said. "My grandparents couldn't, or didn't want to, revisit the grief they endured when Edward never returned home. I believe they were told only that their son was

missing.

"Edward was their future. They had little choice but to sell their farm and move into town. Their health suffered. There was no funeral, no eulogy, no personal ceremony to mark his passing. There was only the photo on the wall."

Wendy describes the frustrating delays and official intransigence but also her excitement at key discoveries during her search. After many false leads, she eventually found the exact time and place of the crash and even the name of the Luftwaffe pilot who

shot down her uncle's Royal Air Force Halifax bomber.

The most amazing and unexpected discovery came in 2003, with an email from one of Edward's crew, wireless operator Sergeant Ron Wisson, who said he had bailed out of the plane just before it crashed in 1943; the sole survivor. Ron, despite living in Cornwall, became a close friend of Wendy's and greatly helped her research.

"He made Edward real for me, not just a dusty photo," Wendy said. "All the hours of research that Ron and I did not only answered many of our questions, but also went some way to help heal the emotional wounds."

The significance of the cap badge, sent to New Zealand in 2020 by the Dutch team, was "huge", Wendy said, both for herself and her mother, Margaret St George, Edward's sister. "This was a personal item we could touch – at last a conclusive result."

However, it did not mean the end of the search, because Edward's final resting place was still unclear, as bodies were often moved by German authorities. "I may never know my uncle's gravesite... but I'm hoping that a person, government organisation or group will contact me after reading, or hearing about, this book."

# Emissions Reduction Plan must cut big dairy pollution to be credible

Greenpeace Aotearoa says that to be credible, the Government's upcoming Emissions Reduction Plan must cut climate pollution from intensive dairy - New Zealand's biggest climate polluter.

In a recent speech, Climate Change Minister, James Shaw, announced that on May 16, the Government will release its first-ever - and much delayed - Emissions Reduction Plan. Lead agriculture campaigner Christine Rose says "the Minister's speech diverted attention from the Government's failure to cut emissions from intensive

dairying. "Intensive dairying is the number one cause of climate pollution in Aotearoa. To be a credible tool for fighting climate change, the Emissions Reduction Plan must dramatically reduce dairy pollution by halving the herd and phasing out the synthetic nitrogen fertiliser and supplementary feed (such as PKE) that drives it."

Greenpeace's 32,000-strong petition calls for the Emissions Reduction Plan to include a \$1 billion regenerative agriculture fund, to deliver a Just Transition for farmers, and

support a shift to more plant-based, regenerative organic farming.

"The Emissions Reduction Plan must turn around the farming sector, from being Aotearoa's biggest polluter, into a solution for tackling climate change and restoring nature, through more plant-based regenerative organic agriculture," says Rose. "To date, the Government's response to the existential climate crisis has been desperately inadequate.

Despite declaring a climate emergency and pledging to reduce methane emissions by 30% by 2030, industrial

dairy has been given a free pass. Both the Emissions

Trading Scheme - where the taxpayer pays for the dairy sector's emissions - and the agri-industry alternative, He Waka Eke Noa - is expected to reduce emissions by less than 1%.

**Woodward's FIREWOOD**

Animal Bedding For Stand Off Pads Calf and Goat Sheds Wintering Barns

- Untreated ground up waste wood —
- Raw material stockpiled then ground to order —
- Pick up or delivered to your farm —
- 9m<sup>3</sup> truck loads —
- 65m<sup>3</sup> truck loads —

**06 755 2047**

124 De Havilland Drive, Bell Block • office@woodwardsfirewood.co.nz  
www.woodwardsfirewood.co.nz

**Equipment Hire**

348 South Rd, Hawera  
Ring the yard on 06 278 7974 during working hours or message us on facebook

**Celebrating 20 years in Business**  
Jeff, Sheryl and the team would like to thank their many clients for their valued support over the past two decades.

**Equipment Hire servicing South Taranaki since 2002**

**CLASSIC CARPETS FLOORING XTRA**

Call us today for your free measure and quote!

NEW PLYMOUTH Borrell Ave, Westown  
E: classic@flooringxtra.co.nz P: 06 753 3933

CARPET • VINYL • TIMBER • LAMINATE • RUGS www.flooringxtra.co.nz

**HAWERA KITCHENS THE KITCHEN BROTHERS**

50 UNION ST HAWERA  
06 278 7044  
info@haverakitchens.co.nz  
www.haverakitchens.co.nz

# Showing and shining proves a hit at Rahotu

The Show 'n Shine which Hyway 45 Cruisers run every year has no entry fee and no prize money. Just rock up to the Rahotu Domain on Mother's Day with your car, tractor, bike, or anything else of interest that has wheels. Then chill out, have a look at what everybody else has come along in, and have a yarn about cars or anything else that takes your fancy. "It brings out all types of vehicles and all types of people, and different clubs come," said organiser Trevor Vercoe as he directed the incoming traffic. Meanwhile the Rahotu Home and School Association were providing refreshments.

The show attracts enthusiasts from throughout the province and beyond. "We'll probably get a crew from Whanganui as guys from our club go to their events," says Trevor. Hyway Cruisers has about 170 members and has been going since 2002. The club is based in Opunake and its members come from all over Taranaki. This is the eighth year they have run a Show 'n Shine, and it's always held on Mother's Day. "A group of guys chose this date not realising it was Mother's Day, and we've been holding it then ever since," says Trevor. It used to be held



Beau Le Prou and his Dodge.

at the Rahotu Tavern, but increasing numbers saw the event shifted to the Rahotu Domain. The most vehicles they ever had turning up was 135, and that was shortly before COVID, says Trevor.

Among those arriving were Dennis Nolly and Mike Coils from Eltham in a 1931 Model A Ford pickup. 1931 was the last year Model As were made says Dennis. One of the distinctive features of that year was the fuel taps under the bonnet rather than under the dash, he says, flicking up the bonnet.

The Model A is emblazoned with the name of Stratford company Kleeman and

Bishop which later morphed into Mountain Motors, and also comes with siren. In the back are drums bearing the name of Peak Petroleum, an oil company whose presence in New Zealand dates back to 1865 and the discovery of oil at Moturoa. These are all additions added by Dennis when he picked the Model A up from Matamata two years ago.

"I'm just trying to make it look like a service vehicle," he says. "I got a siren, and then I got a flashing light as it's supposed to be a breakdown vehicle." The signage was only added a few months ago.

Another Model A was



Skinny the Skeleton arrived in a Model A.

parked nearby, with a skeleton ensconced in the driver's seat. Owner Dean Goble of Tataraimaka said Skinny the Skeleton "moves around a bit" and is something he likes to have fun with. The Model A had originally been an Invercargill Public Works truck and he had picked it up three years ago.

"I wanted to own a vintage car for years," he says. "The Fords did catch my eye, and parts are readily available

for Model As."

Arriving in a 1275GT mini with his granddaughter Aliyah was Les Fever from Oakura.

"It's 475 shorter than a standard mini so you can sit in the back seat and a person with long legs can drive it," he says.

It was just a bare body when he came across it in somebody's shed 35 years ago.

"The body was sitting there, and I thought somebody needs to finish it. It didn't have anything, so everything's been added."

So he got a donor car which had been driven by a young man who had hit a power pole, but told his parents he had hit a gate post, says Les, so he used that to build up



Les Fever and granddaughter Aliyah in a 1275GT Mini.

the mini.

Well known Opunake identity Beau Le Prou was there with a 1960 Dodge Pioneer he had picked up from Wellington 6-7 years ago. Being Canadian-built the Dodge came with right hand drive. The previous owner had spent about 12 years working on it.

"All I've done is put white walled tyres on it," says Beau.

**Craig Corrigan ELECTRICAL** OPUNAKE

- All Cowshed Wiring
- Farm Control Systems
- Domestic Wiring
- Electrical Inspections

*No job too big or too small*  
Wiring the Coast - 27 years experience  
Ph: Craig on 027 207 7775

**SCHURR IRELAND**  
CHARTERED ACCOUNTANTS

NEW PLYMOUTH ELTHAM  
p. 06 759 0105 p. 06 764 8305

www.schurrireland.co.nz

**S.O.S**  
Specialist Outdoor Services  
call 027 605 8437  
31 King Street - Opunake

Specialist Outdoor Services include

- 3.5 ton Digger Hire, Landscaping,
- Demolition Work - Total Section Maintenance
- Tree Maintenance - Firewood
- Lawnmowing - Waterblasting - House Painting
- Removal of Greenwaster/Inorganic

25 year experienced independent contractor  
Taranaki owned

Contact: DAVE 027 605 8437

**NEED A SHED?**  
"We'll See You Right"

We have extensive experience with over 3000

- \* Barns
- \* Implement Sheds
- \* Utility Sheds
- \* Stables
- \* All purpose Farm Sheds

We are fast, efficient and economical.  
Free onsite visit to discuss all your requirements

**STRATFORD**  
75 WARWICK RD, STRATFORD - 765 7800

# Flowers for Winter

Winter doesn't have to be all doom and gloom. Add some flowers to pots or your garden. Here are Palmers winter favourites.



**Above: Pansies show off their happy faces.**

**Pansies**  
A popular little flower which brings joy with their happy faces. There is a huge amount of variety in colours. They make a big impact planted out in all one colour and look just as good in a mixed colour planting. Plant in sun or shade.

**Stock**  
An upright plant with either single or double flowers and a gorgeous scent. Can also be used in a cut flower arrangement.

**Sweet Pea**  
Beautifully scented and also gorgeous looking flowers. Can grow up a

basket, planted between pavers or rocks or as a ground cover.

**Primula**  
There are two different types of primula. Primula obconica is the largest and makes a great centre piece in a large pot or perfect for the garden bed. Primula malacoides has dainty flowers in soft tones. Both will bloom for a long time.

**Polyanthus**  
Adds brightness with cosy

bunches of bright flowers. Fills in spaces well. A great long lasting bedding plant.

**Snap Dragon**  
A very long lasting flower which will flower long into the warmer months as well. They look amazing as a border and can also be used for cut flowers.

**Cyclamen**  
The great thing about cyclamen is you can grow it indoors and out. They love the colder months and if they start to look a little sad inside, pop them outside for a while to get some of that cold air.

**Right: Clockwise from top left: Polyanthas, Allysum, Stock, and Sweet Pea.**

## Gardening with Palmers Gardening Centre



# New owners promise relaxing atmosphere and delicious food

Don Barshana and Chanika Galwaduge are the new owners of Café Bottanix at Palmers Garden Centre in New Plymouth.

Countdown for 10 years as a bakery manager and baker. Before then he had worked in Auckland for seven years and in New Plymouth for three years. They have a

three and half a year-old daughter, Clara Okithma. .Originally from Sri Lanka, they have between them 20 years' experience as a chef and 10 years' experience as

a barista. Everyone in the staff at Café Bottanix comes from different parts of the world, and are ready to welcome everyone to enjoy the relaxing atmosphere and delicious food and coffee they provide.

Café Bottanix is open from 9am to 2.30 pm daily



Chanika Galwaduge and Don Barshana with daughter Clara Okithma.

*Headstone Warehouse*  
WHERE YOU GO FOR HEADSTONES

33 High Street,  
HAWERA - Ph: 06 278 5518

209 Coronation Ave,  
NEW PLYMOUTH - Ph: 06 759 9975

www.HeadstoneWarehouse.co.nz  
EXCEEDING THE STANDARD SINCE 1914

# BROWNING & (MATTHEWS) OPTOMETRISTS

As well as regular eye exams, we offer a variety of specialist services including low vision support and post-operative care

Fortnightly clinics  
To book an appointment  
phone (06) 759 4126  
www.matthews.co.nz



*Palmers knows plants*

At Palmers, you'll find a Garden Centre full of passionate gardeners who are ready to share the joy of good living with you. We are all about creating beautiful spaces, at our place and at yours. We're locally owned and operated, packed with quality products and expert advice for your home and garden.

**CAFÉ BOTANNIX**  
The ideal setting to stop in for a delicious meal, made in-house with seasonal garden produce. Our tranquil garden setting and covered outdoor courtyard is the perfect place to relax after meandering through the garden centre.

Cnr Katere and Devon Road, Fitzroy, New Plymouth  
Ph: 06 758 7455 Open 7 days from 8.30am

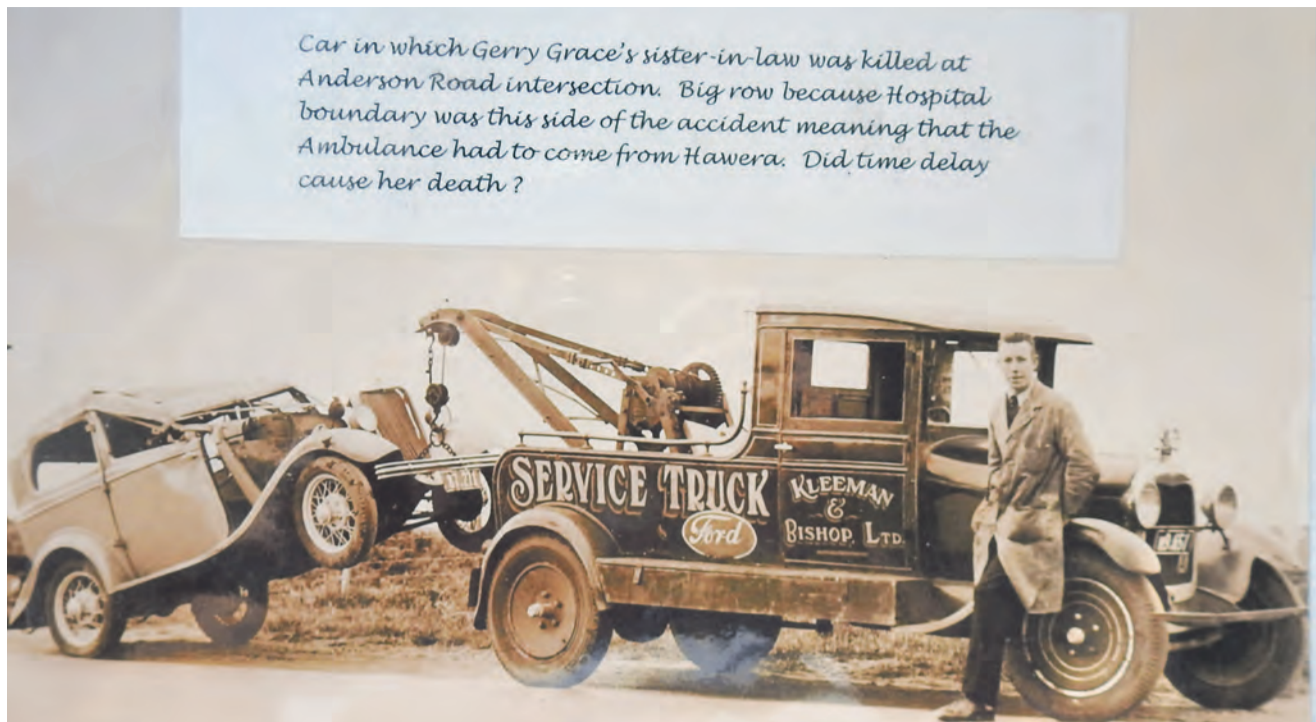
**Palmers**



# Delay may have led to 23 year-old driver's death

When Dennis Nolly went looking for a photo of a truck logo he got more than he bargained for. Dennis had picked up a 1931 Model A truck and wanted to do it up in the colours of Stratford company Kleeman and Bishop. This company later morphed into Mountain Motors so he asked them if they had any photos of a

Kleeman and Bishop vehicle bearing that company's logo. What he came across was a photo of a Kleeman and Bishop service truck carrying away a badly mangled Ford Y from the scene of an accident on the north side of Eltham. The female driver had been killed and Dennis has since learned the accident took place in 1941, and that



The photo taken after the 1941 accident.

the driver was 23 year-old Cecilia Lorraine Bourke, known as Lorna. It appears she may have lived had an ambulance from Stratford rather than Hawera attended her. Because the accident had not happened in what was designated Stratford's area, an ambulance had to be called from further away.

"Car in which Gerry Grace's sister-in-law was killed at Anderson Road intersection," reads the caption accompanying the photo. To give the story a Twilight Zone twist Dennis lives at the intersection of Anderson Road and the State Highway where the accident took place.

"My mate Morris Pretty owned Mountain Motors, and I said have you any photos of Kleeman and

Bishop because I was thinking of putting their logo on my Model A," says Dennis. "I saw that and thought shit that happened on my corner. Looking at the roof it's obvious she rolled it somehow."

It appears that but for a turf war as to which ambulance to call for, she may have lived, as further outlined in the photo's caption.

"Big row because Hospital boundary was this side of the accident meaning that the Ambulance had to come from Hawera. Did this time delay cause her death?" the caption read.

In other words an ambulance had to come from 20km away in Hawera, rather than 10km away in Stratford.

"Just up the road is

Cornwall Road, and that's the boundary between South and North Taranaki, so she would only have had to have been another kilometre away and she could have survived," says Dennis.

A scan through the phone book led Dennis to contact Shaun Grace of New Plymouth who was able to name the driver, who is buried at the Stratford Cemetery next to her parents John and Mary Bourke. She died on 12 August 1941.

"The vehicle belonged to my father...Gerald Grace... my mother Bridie was one of Lorna's siblings, so Lorna was my father's sister-in-law," says Shaun. "My father was the Stratford Town Clerk and was the youngest Town Clerk to be appointed in New Zealand at that time.

"My understanding is that the road where the accident occurred was at that time, part of a boundary between Stratford and Hawera Ambulance services.

"There was some thought, that if the ambulance had been able to travel from Stratford...regardless of any boundary issues and being a shorter distance...that the time factor could have been important in attending to Lorna's injuries...something of course that will never be known.

I was only two and a half

years of age at the time of the accident, so my memories only relate to the mention of Lorna at family gatherings down through the years and the sadness at the fact that she passed at such a young age.

Neither I nor our extended family were aware of the existence of the photo until Dennis contacted me and kindly invited my wife Marie and myself to visit him to view the photo."

As well as putting the company name on the truck Dennis added a few extra touches of his own including the fact the company was established in 1920. He cites a family connection with the Kleeman and Bishop name.

"my father(Lou) was a good friend of Bill Kleeman, the founder's son. He was always a friend of the family. He and Dad started the Stratford Photography Club. Bill was a very good photographer and went all over the world taking photos. He met this lady, Elsie in America and they got married."

Given Bill's interest in photography could Bill have taken the photo of the wreck?

"He could have, but it did sound, by the way the photo was written, that the person who took the photo had some sort of connection to it," says Dennis.



Dennis Nolly and his Model A Ford.

**gibsonplumbing** LTD.

**CERTIFIED**

Plumbing, Gasfitting and Drain Laying

Plus! Roofing, Wood Fires and other Heating Solutions

06 761 8757 027 445 7164  
gibson.plumbing@xtra.co.nz

**Phillip Joblin**  
**Kitchen & Furniture**  
Cabinet Maker & Restoration Work



We build new and restore old!!

3 Mawhitiwhiti Rd,  
Normanby, Taranaki  
06 272 8174 or 021 0473 493  
email: iijobs@outlook.co.nz | Facebook: @Pjoblin

eieio.co.nz

Offering combined expertise across rural, residential and lifestyle property...

Let the best team help you.

**Blair Burnett**  
021 190 7728  
blair.burnett@eieio.co.nz

**Robyn Burnett**  
027 414 0733  
robyn.burnett@eieio.co.nz

1128 South Road | Oakura

**McDonald**  
REAL ESTATE  
LIMITED



**HARDINGS**  
FUNERALS

The Hardings Difference.  
Warm. Caring.

Here for our community, here for you whenever you need us

Support available throughout All Covid Levels

17 Regent Street, Hawera  
(06) 278 8633  
www.hardingsfunerals.co.nz



# Mangatoki WI show ANZAC Day colours

At the end of the week, prior to ANZAC Day, three members helped with the wreath making in Eltham. Seven members attended the ANZAC Service in the Kaponga War Memorial Hall. Our wreath was made by Bev Marx and laid on the Memorial lawn by our President Robyn Roberts.

On April 27, 12 members enjoyed an Indian meal together at Indian Zaika Restaurant, Hawera and then on to Cinema 2 where two other members joined them to watch the film "Queen." There were divided opinions on the film but most enjoyed



Mangatoki WI members took part in the ANZAC Day service at Kaponga.

it. May 4 was our usual meeting day and about nine members met up at Karen Joblin's in Eltham to pool cars and drive up to New Plymouth, to learn the art of small flower and glass dome arrangements. The tutor was Holly of

Foragecrest on Devon Street East. Afterwards members went to Cafe Green Door for lunch. A good day out. The sick visiting was done by Judy Barr.

Lucy Moger  
Mangatoki W.I. Reporter

The next issue of the Opunake and Coastal News comes out on June 2. We welcome your contributions.

# A graduate with distinction



Tara Clement.

Tara Clement, daughter of Bex and Haydn Langton, Pete Clement and Esther Ward-Campbell, and granddaughter of Colleen and Ian Clement graduated from the University of Otago with a Masters in Teaching and Learning (Secondary) with Distinction. Tara is teaching science and biology at Nayland College in Nelson

To advertise with the Opunake & Coastal News phone (06) 761 7016

## Michelle Hofmans



The personal touch.

Michelle was spot on. communication was top notch. With me being abroad and in amongst covid restrictions. She took the extra steps needed for these tricky times.

No problem recommending her to any prospective clients, buying or selling. Plus she knows how to catch possums! Champion!

Verified by **ratemyagent**

M: 027 531 7684  
E: michelle@fntaranaki.co.nz



Licensed Salesperson REAA 2008

# Peter Kuriger Engineering & Concrete

We Repair Farm and Contracting Machinery - Hydraulic Rams Diggers and all Buckets - Tip Trailers - Quarry Equipment and undertake General Maintenance - plus Stainless Welding

Need Concrete? troughs, culvert pipes and lids , bridge decks, box culverts and bases, inspection pipes and much more....call us.

889 Upper Kaweora Road - Opunake 0274 526 718 - 06 761 8122



# Magical Music Moments (MMM)

## : *Hotel California* by The Eagles

*This issue features a new occasional column, which outlines some magical musical moments, such as (later on) Freddie Mercury and Queen's Bohemian Rhapsody, the Three tenors singing O Sole Mio, Amira Willighagen's winning performance in Holland's got Talent with Nessun Dorma, as nine-year-old – and many more*

Well worth a look on Google is the 1998 version of The Eagles playing *Hotel California* at the Waldorf Astoria Hotel, New York. The special occasion was the induction of the band into the Rock and Roll Hall of Fame. The playing of their most famous hit is amazing as the seven men (current and former band members) play their instruments as if their lives depended on it. At the end the packed audience were all, to a person, on their feet in rapturous applause, at one of the greatest musical performances, to my mind.



The Eagles induction into The Rock and Roll Hall of Fame 1998. From left: Bernie Leadon, Don Fender, Joe Walsh, Glen Frey (now deceased), Don Henley, Timothy B Schmidt, and Randy Meiser.

The Eagles were founded in 1971 by Glen Frey (guitar and vocals) and Don Henley (drums and vocal). Other band members, at one time or another, have included Bernie Leadon (guitar and vocals), Randy Meisner (bass guitar and vocals), Don Fender (Double guitar and vocals), Joe Walsh (guitar and vocals) and Timothy B Schmidt (guitar and vocals).

musicians (current and past) were on stage for their big night, including Glen Frey, who dramatically turns to face drummer (and main vocalist) Don Henley when the iconic line is sung: *We are programmed to receive. You can check out any time you want, but you can never leave.* Sadly, Glen passed away in 2016 aged 67.

Don Fender (bearded) is easily identified as he always plays a double-necked guitar, Timothy B Schmit has very long straight hair, Bernie Leadon, dressed in black, has curly shortish hair and Randy Meiser, with bow tie and shoulder length hair is on the extreme left. Joe Walsh, dressed in a brick-like outfit, has short brown hair and his guitar playing is remarkable as he all but wrestles with his guitar especially in the latter

part of the performance, passionately lifting his leg up in the air, as he teases the strings to optimal resonance. Joe Walsh, who had long blonde hair back in 1975 when he joined the band, was the wild man back then, wrecking hotel rooms and throwing furniture out the window. There was a hint of that, as he threatens (jokingly) to hurl his guitar into the cheering crowd at

the end of the performance. The Eagles were the world's biggest selling band in the 1970s with Their Greatest Hits (1971-1975) selling 38 million copies – the USA's biggest selling LP ever. In total they have sold 200 million records worldwide and 100 million in the USA alone. Hotel California, which was adjudged Record of the Year sold 26 million copies

in the USA (and 32 million worldwide).

Overall they had five number one hits in the USA, six number one albums and they won six Grammy Awards.

Their hits included such numbers as *Heartache Tonight*, *Witchy Woman*, *New Kid in Town* and *Long Road out of Eden*, which reached number one in 2007.

The group has broken up and reformed more than once. Their first split was in 1980, but they reformed in 1994 for their Hell Freezes Over Tour.

The group is still going strong with a tour of the USA and the United Kingdom underway this year. The current lineup is Don Henley, Joe Walsh, Timothy B Schmidt (from the 1970s) and Vince Gill.

Anyway, find *Hotel California* by The Eagles, 1998 on Google and you'll be glad you did, as their sterling performance is memorable.

*Rolland McKellar*



**Furniture Zone**  
make your house a home

**HOMESTEAD BEDROOM BUNDLE**  
QUEEN SLAT BED +  
2 BEDSIDE TABLES



**\$1297**

Was \$1657 | Save \$360

**MATTRESSES**  
FROM

**\$99\***



**BUY ONE  
GET ONE  
FREE**  
ALL CUSHIONS

**HOMESTEAD DINING BUNDLE**  
7 PC DINING SUITE



**\$1599**

Was \$1959 | Save \$360

**ASK US ABOUT OUR INTEREST FREE FINANCE OPTIONS.**  
WINZ QUOTES AVAILABLE.

PH 06-215-3020 | NEWPLYMOUTH@FURNITUREZONE.CO.NZ  
298 DEVON STREET EAST, NEW PLYMOUTH  
OPEN TUE-FRI 9:30AM-5PM & SAT-SUN 10AM-5PM

Offers are valid until 31.05.22. Terms, conditions and exclusions apply.  
See instore for details.

**SANDFORDS**  
RURAL CARRIERS



**For competitive pricing on all your rural cartage requirements - Give us a call today!**

Taranaki wide

Phone 0800 707 404

# New screening system introduced at Taranaki Base Hospital

Visitor health screening kiosks are being introduced at Taranaki Base Hospital to help keep patients, visitors and staff safe from COVID-19.

The touch screens welcome visitors and ask them to answer simple questions about any symptoms they may have experienced in the last three days, and if they have had any contact with someone with COVID-19.

Visitors also log where they are going on campus, creating an emergency register.

They are now in place at the main and maternity hospital entrances for an initial trial period to gather feedback about the user experience, before they are rolled-out to all entrances at Taranaki Base Hospital, Hāwera Hospital and Stratford Medical Centre.

The system will ensure a consistent health screening process for every visitor to the hospital campus and provide a record of people on site at any given time.

Taranaki DHB project sponsor Wendy Langlands said: "Asking visitors to answer a few simple questions before entering the hospital will mean we can ensure our COVID-19 and other infection prevention

controls are consistent and effective.

"The system also means we have an up-to-the-minute register of who is on site, enabling us to improve our emergency management protocols and Health and Safety requirements."

If answers to any screening questions suggest someone

may present a heightened risk of infection, further screening will take place to maintain safety.

Security guards will remain at entrances to help people, and information posters will advise and inform visitors about the screening process and why it is being implemented.

"We are not trying to prevent people from visiting our hospital, not at all, this is about protecting our most vulnerable patients from the risk of an infection that may be dangerous for them," explains Wendy

"An electronic system enables us to do this in a more consistent and effective man

## Wonder Woman at Pukeiti



By Coastal Taranaki artist Graham Kirk.



# SAVE 18%\*

OFF OUR STANDARD ADVERTISING RATES

Call our Marketing team on  
**06 761 7016**  
to find out how  
Quote this number: 1807123

\* WHEN YOU PLACE AN AD THIS SIZE IN EACH ISSUE  
OF THE **OPUNAKE & COASTAL NEWS** FOR 12 MONTHS

**OPUNAKE & COASTAL NEWS** FOR ADVERTISING THAT WORKS!

## Come hear what you've been missing



**100% Kiwi Owned**

Proud to be part of your local community

Your local hearing expert, **Lisa Keen**, is here to help you hear all the sounds on the job. Don't wait to get the quality care you deserve. Call today to start your journey with better hearing.



Call (06) 757 8380

280 Devon St West  
New Plymouth

Lisa Keen, AuD, MNZAS



LISA KEEN  
audiology

## KEEP OUR WATERWAYS PEST FREE

this duck hunting season



WITH YOUR HELP WE CAN STOP FRESHWATER PESTS FROM SPREADING.

Follow these steps for everything that's been wet when you move between any waterway in New Zealand.

CHECK

Check anything that has been in contact with the water. Remove any debris or plant matter.

CLEAN

Soak or scrub your equipment, including both boat and trailer, with 10% detergent solution. Leave each item wet for 10 minutes.

DRY

Completely dry items to the touch, both inside and out, and then leave for a further 48 hours minimum, ideally 7 days.

For more information, visit [mpi.govt.nz/check-clean-dry](https://mpi.govt.nz/check-clean-dry) or talk to the Taranaki Regional Council.

Ministry for Primary Industries  
Manatū Ahu Matua





Taranaki Regional Council

# Playground looks out to mountain and sea

The Now Open sign seemed to say it all. After a number of delays caused by among other things lockdowns and knocked back funding applications the Bowen Crescent Playground was back open.

A small crowd gathered at the playground near the top of the road leading to Opunake Beach on Saturday May 7 for the opening, although there had been a blessing carried out the previous Thursday.

The playground had been redeveloped by the Opunake Community Spaces Development Group, a charitable trust set up by Lisa Beynon with the aim of developing, creating and enhancing public recreation spaces within the Opunake district. A mother of two young boys, Lisa had initially raised concerns with the South Taranaki District Council about the safety of the Opunake Beach playground. They asked her if she would be interested in being part of what was happening at the Bowen Crescent playground which was getting to the end of its useful life and needing replacement.

Cain and Bianca Aldridge, Hannah Drought and Daniel Clarke later joined her as



Daniel Lawn greets his son Isaac as he finishes the slide. Behind them are Mitchell Campbell and MacKenzie Weir.

trustees. The South Taranaki District Council approved the project and granted her \$50,000, some of which went towards demolishing the existing playground. The playground was put together by Hamilton-based Playground Creations which designs playgrounds around the country. The mountain had long been one of the old playground's drawcards,

and a new revamped version using the original mountain as a base looks set to be just as popular a part of the new playground. The mountain also comes with interactive talking tubes allowing conversations between people at different points of the mountain. A rubber pour gives the blue and green colours seen on the maunga which it reflects. There is

also a touch of greenery reflecting that found in the National Park.

Other features of the playground include a metre-wide slide, hammock and custom-made surfboards.

Lisa said she was pleased with how popular the swing set, hammock and the surfboards were proving to be. She had wanted the surfboards there, to give those unfamiliar with surfing some idea of what it might be like.

Lisa says she wanted a playground which reflected both the maunga and the sea.

"I hope there are many more years of memories and fun to be had here," she told everybody.

When she spoke to the Opunake and Coastal News in July last year she said she had hoped to have the playground ready in

*Continued page 17.*



The lolly scramble. Lisa Beynon atop the mountain with son Bodhi Clarke(4).

playground  
creations

creating play for everyday!

**creating magic** We create playgrounds to inspire and ignite the magic for play. We are passionate about design excellence, outstanding quality and exceptional play value. Your project. Our passion. Let's play!

GREENSPACES | PARKS | RESERVES | SCHOOLS | KURA

Get in touch - We'd love to chat

0800 273 283 | build@playgroundcreations.co.nz | playgroundcreations.co.nz

BRANDERSON HOMES LTD

TRANSPORTABLE HOMES

Office, Show Room & Workshop located at  
**47 Hautapu Road, Cambridge**

branderson.homes@xtra.co.nz  
www.brandersonhomes.co.nz  
07 827 3901



# Playground looks out to mountain and sea

Continued from page 16.

November, in time for summer. COVID restrictions among other things meant this could not happen.

“Timing wise it would have been nice if we had had it in time for summer,” she said.

The delay did however give them more time for planning and fundraising. One particularly popular fundraiser had been the bowling one at the Opunake Bowling Club which netted \$9000.

“Even under COVID restrictions, we were still able to hold a good event,”



Minnie Julian(2) on the swing.

says Lisa.

While Opunake Lions Club members sizzled the sausages, South Taranaki District Council mayor Phil Nixon was among those trying out the slide.

“This is a fantastic asset for the community, and it’s great to see they were able to retain the mountain,” he said

New Plymouth MP Glen Bennett was similarly enthusiastic.

“I met Lisa about 18 months ago and talked to her about her vision, and the community has come together to make this happen,

and it’s not a cookie cutter playground, it’s designed specifically for children and their families. So often we expect councils and government to do everything, but this shows what happens when the community comes together and brings their life and energy. It’s incredible.”

Diane Weir was there with her granddaughter Mackenzie Weir who had often come to the old playground.

“When we were walking over here and she saw it, she said cool,” said Diane.



Mayor Phil Nixon tries the slide for size.

## Sandfords Manaia Golf results

Congratulations to Sam Jones on winning the Auckland Stroke Play Championship played at Windross Farm with scores of 63, 68 and 66.

May 7. Saturday Men Stroke Play. 1. Sam Laing. 2. Nod Symes. 3. Jacob Gopperth. 4. Jim Ngere.

May 14. Saturday Men Stroke Play. 1. Carter Symes. 2. Jacob Gopperth. 3. Kevin Murrell. 4. Trevor Larsen. 5. Phil Elliott.

## On this month in history First Pulitzer Prize to native American

On May 5, 1969 the first native American received a Pulitzer Prize. The recipient was N. Scott Momaday for House of Dawn.

The Pulitzer Prize was started in 1917 with a bequest (\$250,000) from the Will of Joseph Pulitzer a rich newspaper publisher. Originally, the awards were organised by Columbia University, New Jersey.

The medals (designed by Daniel Chester French) are awarded for outstanding public service and achievement in American journalism, letters and music.

T AND H APPLIANCES

# Betta ELECTRICAL

It's our **15th** birthday

**LET'S CELEBRATE!**  
16th-31st May

**15** days of deals!

**\$15** specials!

Spend over \$500 and go in the draw to **WIN** a **Panasonic 55 inch TV\***  
\*T&C apply

**15** days of giveaways!



**SHOP LOCAL**

232 HIGH STREET, HĀWERA 4610  
PH: 06-278 4338

# SAFE launches petition calling for a Commissioner for Animals

A petition calling for a Commissioner for Animals, and launched by animal advocacy group SAFE has received support from the New Zealand Animal Law Association (NZALA), Helping You Help Animals (HUHA) and the New Zealand Anti-vivisection Society (NZAVS). Other groups are expected to add their support in time.

The Animal Welfare Act 1999 was designed to grant all animals a set of basic freedoms, including freedom from pain and distress, and the freedom to display normal patterns of behaviour, say SAFE. The Act is strong on paper, but applied selectively. Gaps in oversight, monitoring, and enforcement leave millions of animals unprotected.

SAFE CEO Debra Ashton said the current regulatory system is not upholding those legal rights for animals.

"It's time to give animals an independent voice who will scrutinise systemic animal abuse occurring in Aotearoa," said Ashton.

"We still have hens in cages, farrowing crates are yet to be phased out, and farmed animals without adequate shelter. Extreme weather events



**Battery hens like this one need a Commissioner for Animals say SAFE.**

cause immense suffering to animals every year, and animals continue to suffer in the entertainment sector."

"There are Government bodies to represent the interests of vulnerable members of our community, including children and even the environment. Animals also need to be represented at the highest level."

NZAVS Executive Director Tara Jackson said "A properly implemented

Commissioner for Animals would mean so much for animals suffering in science. There are so many ways we could improve our science and remove animals, but we need leadership from the NZ Government. A commissioner could provide that leadership."

HUHA CEO Carolyn Press-McKenzie said "Daily, we see animals across New Zealand fall victim to ignorance and circumstance.

Cruel practices such as tethering and inappropriate confinement are often normalised. As hard as we try, we struggle to secure the support that so many vulnerable animals need. Implementation and protection of their physical and emotional safety through effective and enforceable processes is long overdue."

MPI is responsible for seizing export opportunities and growing the agricultural

sector. The Ministry also oversees the welfare of farmed animals and animals used in research, testing and teaching, which brings an inherent conflict of interest.

Animal entertainment industries, like racing and rodeo, are allowed to monitor their own animal welfare standards with little external oversight.

Ashton added "We are

calling on people to help us make history for animals by signing our petition for a Commissioner for Animals in New Zealand."

"It's an important step towards greater independence for animal welfare, and our hope is it'll bring us closer to the establishment of a dedicated Ministry for Animal Welfare."

## Bird shooting season fun for some

The bird shooting season means countless birds, including natives like pūkeko, kakīānau (black swan), pūtangitangi (paradise shelduck), pāpera (grey duck) and kuruwhengi (Australasian shoveler duck), will be killed, say animal advocacy group SAFE.

Australia has already banned duck shooting in three states. SAFE CEO Debra Ashton says Aotearoa needs to follow suit.

"As a country we talk a big game about protecting our native species," said Ashton. "Yet we allow these animals to be the target of ruthless killing every bird shooting season."

"The rest of the year, families will feed the swans and ducks at the local pond. From tomorrow, these same birds will become targets for shooters."

Overseas studies indicate wounding rates from duck shooting could be up to 40 percent.

"Wounded birds aren't always collected, and they can be susceptible to starvation, infection, and a slow painful death."

"This is why SAFE is calling for a Commissioner for Animals. The needs of animals across the board are being neglected, and they need a voice at the highest level."

**DEKEN MOTORS**

VEHICLES FOR YOUR LIFESTYLE

(06) 759 9943

Ton: 0274 938 146

 <p><b>"Immaculate"</b> \$39,990</p> <p>2011 Toyota Land Cruiser FJ CRUISER, 4.0, Petrol, Auto, 120kms</p>	 <p><b>"One owner"</b> \$53,990</p> <p>2017 Toyota Hilux SR5 2.8TD 4WD D/CAB, Diesel, Auto, 56kms</p>	 <p><b>"Top Spec"</b> From \$33,990</p> <p>Toyota C-HR 1.8 Hybrid Mode nero body-kit, Alloys, 3 to choose - white, black, low kms</p>	 <p><b>"Mint"</b> \$19,990</p> <p>2009 BMW 135i M-SPORT 3.0, Petrol, Auto, 99kms</p>	 <p><b>"Super"</b> \$18,990</p> <p>2012 Toyota Camry 2.5 G Hybrid, 2.5, Auto, 78kms</p>	 <p><b>"Immaculate"</b> \$28,990</p> <p>2013 Audi Q5 QUATTRO S-LINE, 2.0, petrol, Auto, 89kms</p>	 <p><b>"Economy"</b> From \$12,990</p> <p>2012-16 Toyota Aqua 5 DOOR 1.5 Hybrid, Auto, 5 to choose, 49kms</p>
 <p><b>"Superb"</b> \$19,990</p> <p>2018 HAVAL H2 LUXURY 1.5 Turbo, 23kms, Leather, Sunroof, One owner</p>	 <p><b>"7 seater"</b> \$110,000</p> <p>2020 Audi Q7 50 TDI 210KW QUATTRO, Auto, 26kms</p>	 <p><b>"As new"</b> \$22,990</p> <p>2014-16, Nissan X-Trail 2.0 &amp; 2.5, 4WD, Petrol, Auto, red, black, 47kms</p>	 <p><b>"Stunning"</b> 37,990</p> <p>2013 BMW X5 35d Xdrive Motorsport, T/DLS, Auto, 50kms</p>	 <p><b>Now</b> \$27,990</p> <p>2015 Subaru Outback 2.5 LIMITED, Petrol, Auto, 79kms</p>	 <p><b>"Electric"</b> \$34,990</p> <p>BMW i3 electric, Auto, 19" alloys, 3 to choose white, black, red, low kms</p>	 <p><b>From</b> \$44,990</p> <p>2019-20 Toyota Hiace vans 4 to choose, 2.8, Diesel, Auto, 16kms</p>
 <p><b>"Full spec"</b> \$72,990</p> <p>2018 Land Rover Range Rover Evoque 2.0 TDi LANDMARK EDITION, Auto, 53kms</p>	 <p><b>"Electric"</b> \$36,990</p> <p>Nissan Leaf G-40 KWS, Electric, Choice of 3 - black, white, silver</p>	 <p><b>"As new"</b> \$28,990</p> <p>2020 SsangYong Korando LTD, Petrol, Auto, 17kms</p>	 <p><b>"As new"</b> \$48,990</p> <p>2014 Mercedes-Benz M1 AMG LINE 3.0 T/DLS 77kms</p>	 <p><b>Now</b> \$26,990</p> <p>2015 Ford Territory TITANIUM AWD 2.7, Diesel, Auto, 100kms</p>	 <p><b>Performance</b> \$28,990</p> <p>2012 BMW X3 MOTORSPORT 3.0 TWIN TURBO, Petrol, Auto, 75kms</p>	 <p><b>Now</b> \$19,990</p> <p>2014 Volvo V40 CROSS COUNTRY T5 AWD Petrol, Auto, 68kms</p>

# Health restructure ignores rural New Zealand

The Government is squandering an opportunity to prioritise rural health and enshrine it in legislation, National's Rural Communities spokesperson Nicola Grigg says.

"The Pae Ora (Healthy Futures) Bill sets out the framework for Labour's ill-timed health restructure and after the second reading in parliament, there is still a woeful lack of focus on the health needs of rural New Zealand.

"The genesis of this restructure was the Heather

Simpson-led review of the health and disability sector. It mentioned rural health at least 30 times and made it very plain that rural services should be specifically planned for, recognising the unique challenges of living rurally.

"This idea is further emphasised by submissions made during the select committee process.

The Rural Health Alliance was concerned with the lack of focus on rural communities and said 'it is well documented that rural communities have

poorer health outcomes than urban communities and this inequity needs to be addressed in these reforms'.

"The Rural General Practice Network also called for rural New Zealanders to be better represented and said 'health inequities will remain and might well worsen as focus shifts elsewhere' and 'change can only occur if this group is identified'.

"The Government needs to include rural communities as a key stakeholder in the legislation. This would require equitable levels of

service, access to services in proportion to rural needs, and all parts of the new health system would be held accountable for ensuring that rural New Zealand achieves the outcomes it deserves.

"By excluding rural communities as a key stakeholder, this Labour Government has turned its back on more than 750,000 New Zealanders. It has one more opportunity to amend the legislation when the Bill reaches committee stage. It would be a lost opportunity to not do so."



Heather Simpson.

## Treasure in Taranaki Saint Therese of Lisieux

Cecilia's Crafts & Antiques at 43 Tasman Street, Opunake has unique affordable treasures. Featured, this issue, is a painting of Saint Therese of Lisieux by J. Ambrose

which Raewyn thinks was painted in the 1880s.

The painting, graced by an attractive ornate frame, has an interesting Coastal history and has been handed down through several generations

of a local family.

Saint Therese of Lisieux was born on January 2, 1873 as Marie Françoise-Therese Martin and is known as Saint Therese of the Child Jesus and the Holy Face. Marie became a French Catholic Camelite nun at the young age of 15 at Christmas 1887.

Sadly she died at the age of just 24 on September 24, 1897 suffering from tuberculosis.

She was beatified on April 29, 1923 by Pope Pius XI and canonised by the same pope on May 17 1925.

In terms of pilgrims only Lourds get more visitors in France. Pope XI said, "St Therese is the greatest saint of modern times."

Make sure you have a good look around the shop after seeing the painting of Saint Therese. Craft items are sold on behalf of local craft people. For example, Joy of Opunake makes all the crochet blankets, Joan, also of Opunake knits all the baby clothes and also creates Maori art and Cheryl and Craig of Rahoitu paint pots, as well as creating wooden items outside as well as mirrors.

Cecilia's also has a plant shop and stocks various seedlings. She will order on your behalf. - just let her know the plants you require. Cecilia's also has a wide range of books for just \$1 or she will swap one-for-one.



This painting of Saint Therese of Lisieux probably dates from the 1880s.

### CECILIA'S ON TASMAN

85 TASMAN STREET OPUNAKE

CRAFT AVAILABLE MADE BY LOCAL PEOPLE. SEEDLINGS ALSO AVAILABLE (ORDER IN STORE)



Opening hours: Wed-Sun 10am-3.30pm  
Any queries give me a call or msg 0272468604.

**NOW AGENTS FOR**



**GILTRAP AG**  
ENGINEERED PERFORMANCE



**DUNCAN**

**ALL GILTRAP & DUNCAN PRODUCTS NOW AVAILABLE**

**BALE FEEDERS IN STOCK**

**NORMALLY \$9850 + GST**

**NOW \$8500 + GST**

**(WHILE STOCKS LAST)**



**NEW PLYMOUTH**

06 758 2274

**HAWERA**

06 278 5119

PAUL 027 498 7277 RAYMOND 027 444 8861

**TransAg Centre**  
AGRICULTURE








Opunake and Coastal News is distributed free to every home & business within the rural area, bounded in the north by the New Plymouth city border, extending east to Egmont Village and around to the edge of Stratford, south to Hawera city border and inland to Kaponga & Eltham.

We want to be involved with your business. Call today and discuss your marketing options with us.



**OPUNAKE & COASTAL NEWS**

**Promote your business or event in our area, call us on:**

Ph/Fax: 06 761 7016 - 23 Napier Street, Opunake  
or e-mail us: ads@opunakecoastalnews.co.nz

**WOF,**  
**mechanical repairs!**

Also servicing farm vehicles including farm bikes. Also lawnmowers.

Come and see us today for all your repairs

Competitive tyre rates and wheel alignments

6 cent fuel discount every day  
(free registration, sign up in store)

Shop Hours:

Monday to Friday: 8am - 5pm  
Saturday and Sunday closed

After hours fuel available - pay by machine situated by the Diesel pump



**CHALLENGE Rahoitu**  
5800 South Rd, Rahoitu  
Ph 06 763 8848

**CHALLENGE** 

Kiwi-As Service Stations

# Contractors pitch in to fix trail

Two weather events in as many weeks hammered the Opunake Loop Trail and now work is underway to fix things up.

The storms which battered the Taranaki coast on Waitangi Day and on February 13 took out several hunks of the Trail. Contractors have been at work on both sides of town restoring what in recent times has alongside the beach and the lake become one of the town's local attractions

As reported in the Opunake and Coastal News (May 5) work was being carried out to restore the walking track along the Waiaua stream and to protect the bridge on the east side of town.

Now work has started to

fix up the damage on the other side of town around the former Opunake dairy factory site. On Friday (May 13) a 35 ton digger was at work restoring the walking track along the Otahi Stream, downstream from the factory.

Opunake Loop Trail Trust chairman Ian Armstrong pointed to the upper trail above where the digger was working.

"We're going to leave the old track. I'm afraid that if we started playing with that it might take the whole bank down," he said.

The section of track at which the digger was working was about 50 metres in length. There was another 60 metres to be fixed up nearer the bridge which crosses the Surf Highway



Gibson Contracting's 35 ton digger working away at the Otahi Stream.

where the walkway had been taken out, as well as another 40 metres at other points around the factory site. Department of Corrections workers supervised by Brian Vincent would be working further upstream..

Two days before, rocks donated by local farmer Darrel Hickey had been placed alongside the river ready to be placed. Ian said he had contacted all the local contractors he knew with heavy machinery and all

of them had been prepared to help out at just a basic minimal rate. So Gopperth, Gibson, Fleming, O'Rorke, Campbell and Langlands Contracting set to work.

What is now the Opunake Loop Trail had begun as the Opunake Lions Walkway, and the Lions Club continues to play a part in the Trail's upkeep. Other groups have since come on board, with some looking after different sections of the trail. Ian, who is also a Lions Club member said they wanted to open it

up to the community a bit more so a charitable trust, the Opunake Loop Trail Trust was set up that now runs the trail. He says that in a recent funding application there were 16 letters of support from local groups including Iwi, Lions, schools and kindergartens.

"Some were really strong letters of support," he says.

Loop Trail Trust treasurer Bob Clark says the work had been costed out at \$200,000 of which \$140,000

had come from donated product and services from local contractors and a local farmer. The rest had come from the Toi Foundation, the Lloyd Morgan Trust, Opunake Lions, the South Taranaki District Council, Fonterra and from the Loop Trail Trust's own funds.

A future project the Trust is looking at is concreting the track under the Otahi bridge.

"Not only is it a bit dangerous for people but it also gets washed out," he says.

**Pleased to help out with the Opunake Loop Trail**

Ph 027 475 2006



**S & A GIBSON CONTRACTING**

**For Prompt and Efficient Service South Taranaki Wide**



- Spraying Fert
- Ploughing
- Tandem Discing
- Power Harrowing
- Levelling
- Direct Drilling
- Roller Drilling
- Cultivating Drill
- Maize Planting
- Mowing
- Teddering
- Swathing
- Baling/Wrapping
- Loader Wagons
- Forage Harvesting
- Stack Tractors
- Tractor & Trailers
- Mole Ploughing
- Trenching
- Water Installation
- Effluent Installation
- Drain Digger



Find us on Facebook!

**MARC**  
027/247/6021  
**SANDRA**  
027/247/6022

**GOPPERTH**  
CONTRACTING  
Est 2000  
admin@gopperthcontracting.co.nz



A section of the walkway downstream from the Otahi Bridge was washed out.

**CG Fleming Ltd**

Oxidation cleaning, Muck Spreader, 5000lt Drain Cleaner, Ploughing, Discing, Rototilling, Harrows, Blading, Levelling, Rock Rower, Stone picker, Tractor Trailer and Rock Trailer, ST Drain Digger



*Happy to help the Ōpunakē Lions with the repairs at the Ōpunakē Loop Trail*

**Phone: 027 201 2925 Crockett Fleming**  
SERVICING SOUTH TARANAKI

**Proud to have helped on the Opunake Loop Trail project**

# Nurses visit schools on International Nurses Day

Nurses visit schools on International Nurses Day

International Nurses Day is celebrated annually on 12 May. To mark the day, Taranaki DHB nurses were out in the community visiting three primary schools, sharing stories of what it means to be a nurse, highlighting the amazing work they do and having a show and tell of items from the hospital.

Jonele Woodhead, Taranaki DHB's Medical Inpatients Nurse Manager said the nurses had a great morning and it reminded them about why they do what they do.

"Every day we are working so hard and sometimes we lose sight of why we're here and why we do this. Getting out and talking to kids reminds you that we do it because we love what we do."

Nurses Mandy Mahony, Kristal Dufty, Rebecca Gibson went along with Jonele to Urenui Primary School.

The class of six- and seven-year olds were bursting with questions and comments for the nurses, excited to guess

what the medical tools were used for and get some fake plaster casts put on.

Six-year-old Ella said nurses were needed so "people can still stay alive" and that nurses "help people to save them".

Nurses Jan Prideaux, Hunter Osbourne, Emma Holmes, Katelin Bromell and Claudia Matthews visited Central Primary School in New Plymouth.

Claudia, Taranaki DHB's Service Lead for Medical and Acute Services said the kids were excited to try on personal protective equipment (PPE), but soon became uncomfortable.

"The kids were saying 'these are so hot and yucky, get it off me', it really highlighted to them what our staff are dealing with day to day."

When the class was asked who wanted to be a nurse, everyone put their hand up.

Down South, Shannon Drought Tracy Gyde and Jess Wadsworth visited Hāwera St Joseph's.

Shannon said it was "It was an awesome interactive session. The outing was enjoyed by all."



The visit to Central Primary School in New Plymouth.



## Morning at the Pouakai Tarns

I was up early yesterday morning and took a walk up the Mangorei Track to the iconic Pouakai Tarns.

It was a beautiful still calm morning for us

The Pouakai Tarns still attracts one of Taranaki's biggest sites/events with hundreds if not thousands to the tarns' shores annually.

The person in the photo is Fleur Hietala from Auckland. Winter is on its way up there with frost on the ground and temperatures below freezing.

Ian McAlpine

## Relief for veterinarians

The inclusion of veterinarians on a new Government Green List is welcome relief for the country's vets, according to Kevin Bryant, Chief Executive of the New Zealand Veterinary Association (NZVA).

Prime Minister Jacinda Ardern has announced the Green List will provide a streamlined and prioritised pathway to residency, incentivising highly skilled workers to relocate to New Zealand long term. The list includes 85 hard-to-fill roles - including veterinarians - to help attract and retain high-skilled workers to alleviate skill shortages.

Bryant welcomed the news, saying it was urgently required to help tackle the current workforce shortage

in veterinary practices across the country.

"Veterinary professionals have been under incredible pressure ever since the COVID-19 pandemic began," he said. "Being included on the Green List will make it much easier to actively recruit highly-skilled veterinarians to work here."

Visa extensions have also

been announced for about 20,000 migrants already in New Zealand to ensure skilled workers can stay in the country.

Announcing the reforms, Prime Minister Jacinda Ardern said: "New Zealand is in demand and now fully open for business. "We know a major constraint on business is access to skilled labour."

**Hipp Accounting Limited**  
If you find yourself spending too much time on administration/ accounting and not enough on what earns you money, it is time to call  
**Hipp Accounting**  
Phone: 06 928 5608  
Mobile: 027 610 0270  
365 Ketemarae Road, Rd15, Hawera 4675  
[www.hippaccounting.co.nz](http://www.hippaccounting.co.nz)

**MOBILITY & MORE 2010 LTD**  
0800 765 763  
TARANAKI WIDE SALES & SERVICE

**Taranaki wide sales, hire and service. Free delivery, competitive prices.**

**MOBILITY SCOOTERS and all living aids - we'll help you with whatever you need.**

**Kevin & Marilyn Bromell**  
**154 PRINCES ST - HAWERA**  
Ph: 06 278 8072 - Freephone 0800 765 763  
[www.mobilityandmore.co.nz](http://www.mobilityandmore.co.nz)

**CARING FOR YOUR COMMUNITY**

**INGRAM'S** PHONE (06) 278 4786  
PROUD TO BE LOCALLY OWNED & OPERATED Bin & Skip Hire

# When engine driven pumps are best

Choosing the right pump for your effluent management is an important decision. After all, the pump plays a key role in the whole operation. If you're wanting a mobile option, or you don't have electricity running to the pond/storage, then it narrows your choice to PTO or engine driven pumps – so when are engine driven pumps best? And what should you look for in an engine driven pump?



MICHAEL PRESTIDGE

- There will be less transmission wear.
  - There will be less depreciation on your tractor.
  - The pump can be moved from farm-to-farm towing it with a Ute.
  - Engine driven pumps can be automated so you can monitor them while getting on with other jobs.
- If you only have one or two farms, and are not pumping large volumes, a PTO



There are things to consider when looking for an engine-driven pump.

You'll want to make sure the body of the engine is covered and lockable. Not only is it good to protect the engine from unnecessary damage, but it keeps the user safe and your asset secure.

**Automation**

There are often automation options available for engine driven pumps. These allow you to control and monitor the pump from an app on your phone. While this functionality might not be to everyone's taste, it can be very useful for contractors – allowing you to monitor the pump running remotely while you get on with other jobs, or for operators wanting to work remotely while looking after staff.

A more simplified option is a remote-control diverter. This can work on PTO or engine driven pumps allowing the operator to remotely switch valves via an app.

**Sound proofing**

Some engine pumps have options for soundproof enclosures. This can be a useful option when needing to operate close to neighbouring properties where noise could be an issue.

*Michael Prestidge  
| Nevada Effluent  
Management Specialist*

pump is likely to be more economical. If you're unsure which option would be best for your situation, give us a call and we'd be happy to advise.

**What to look for in an engine driven pump**

**Make sure you're getting an effluent pump designed to handle thicker slurries.**

There are a lot of engine driven pumps which are only designed for water. These transfer pumps have large engines with large inlet and outlet pipes, so it's easy to think these would handle effluent. However, transfer pumps are designed to shift large volumes of water over a short distance, where effluent pumps need to handle thicker slurries and solids travelling over a longer distance.

**Bigger is not always better**

Don't judge a pump by its horsepower. Like the point above, not all engine driven pumps are designed for the same purpose. Just because a pump has a high horsepower, it doesn't mean it will do the job better. The effectiveness and efficiency of the pump will come from the pump design coupled with how it integrates with your effluent system.

**For best results, match it with your pipes and irrigator**

The pump is just one component of an effluent

system, so it stands to reason the pump can't perform at its best if the pipes and irrigator don't match. In fact, attaching a powerful pump to pipes that are too small to handle the volume and pressure being pumped through can have catastrophic consequences. No one wants a burst pipe, and it's just a waste of energy for the pump.

**Self-priming options**

A pump that self-priming will make the job a lot easier, so we'd recommend looking for engine driven pumps with self-priming options.

**Covered body**

## Biosecurity funding increase a sensible move

An \$111 million injection for biosecurity in the May Budget is a pragmatic acknowledgement of how vital it is to our economy we stop pest organisms at our borders, Federated Farmers says.

"This extra money shows an appreciation by the government pest incursions can wreak havoc in our primary industries, New Zealand's powerhouse for export earnings," Federated Farmers Arable Chair and plant biosecurity spokesperson Colin Hurst said.

"Plenty of Budget rounds go by without any bolstering of funding for biosecurity so we congratulate the

government for making this a priority."

The funding announcement comes on the same day that we mark the fourth anniversary of New Zealand's world-first attempt to eradicate the cattle disease Mycoplasma bovis - indeed the \$110.9m in the Budget includes \$68 million over the coming year to continue momentum on the M. bovis programme.

"We need to keep our foot on the throat of this disease," Colin said.

"Over the last few years 271 farms have been cleared of M. bovis and we're down to just one infected property. Federated Farmers thanks both those farmers who

have taken a hit on behalf of their colleagues and sector, and also those officials who have worked hard to get the programme right.

"It does underline the huge costs and disruption that can be avoided when we stop these organisms from getting into New Zealand, or when they're here, stop them from wider spread in our herds and environment.

"Our biosecurity personnel deserve proper resources to do their work well," Colin said. "This will be increasingly important as our borders open up to international passenger travel."



**CARRFIELDS LIVESTOCK  
SERVICING THE COAST**

**CONTACT OUR TARANAKI TEAM:**

**Brent Espin 027 551 3660 or  
Daniel Hornby 027 636 2090**

**SOUTH TARANAKI**

**Daniel Crowley 027 215 3609  
COASTAL/NORTH TARANAKI**

**Tim Hurley 027 414 6756  
COASTAL TARANAKI**

**Colin Dent 027 646 8908  
CENTRAL TARANAKI**

**Neko McDonald 027 429 8674  
NORTH/CENTRAL TARANAKI**

## HIRE THE LORD OF THE TREE RINGS



**TARANAKI'S LARGEST  
MOBILE LOG SPLITTER!**

Splits more than 50 cu/m in 8 hours just about anywhere on your farm.

Lifts and splits massive rounds straight onto your trailer.

\$200 per hour + GST including operator.

**FOR MORE INFO, CALL JOE GOODIN  
TEL: 027 688 5372**



# He Waka Eke Noa consultation - farmers rightly remain nervous, confused, and angry

As consultation by He Waka Eke Noa (HWEN) has rounded up there are still a vast number of farmers who are nervous, confused, and angry about what the future for managing agricultural emissions in New Zealand might look like, and for good reason.

The fast pace of law-making in New Zealand in recent years is unsettling. Not only for the rural community trying to get their heads around what it all means for them, but for a range of sectors, including participants in New Zealand's Emissions Trading Scheme.

While farmers are grappling with HWEN's two options for managing agricultural emissions; an on-farm levy or a processor levy, the alternative of a blanket inclusion of agriculture in the ETS, which is the option if HWEN cannot convince the Government to adopt its suggested approach, is a particularly frightening prospect.

In its current form the ETS isn't working well for participants, particularly foresters. Adding complexity and workload for officials by including agriculture would be a disaster.

There are already huge delays in every part of the process, such as the time it takes for the administrator, Te Uru Rākau (The New Zealand Forestry Service), to deal with registrations, emissions returns and amendments to returns.

We have had the ETS in New Zealand for 13 years, yet many of the rules surrounding forestry remain untested and the recent reforms have done little to clarify problem areas. Te Uru Rākau seems reticent to meaningfully engage on difficult issues and will not entertain anything but the most restrictive, and usually unworkable in practice, interpretation of poorly drafted rules. This often leaves participants frustrated and lacking resolution or clarity on how the ETS affects them

In addition to that mess, if agriculture was to enter the ETS farmers are worried that the carbon price could be inflated by institutional investors wanting a slice of the action. It's a valid concern, as it's not just emitters and foresters who participate in the market.

The result of this is that even substantial improvements made on farms to reduce emissions may not benefit those farmers if the carbon price keeps climbing.

Farmers feel like the goal posts are constantly shifting and as they deal with the day-to-day running of their businesses, unravelling what a range of new regulations will mean for them is an overwhelming prospect that



**Campbell Stuart.**

leaves them paying on two fronts.

They pay to become compliant with whatever the eventual outcome is, and the complexity of the regulatory framework means they'll pay for advice to navigate its many ambiguities. These costs are significant, and at front of mind.

The current anomalies within the ETS are many and at times they have proven to be completely destructive. We have seen clients make simple administrative errors, like doing something out of order. The regulator can see that there are no environmental consequences of the error but are of the view that the rules leave no room for discretion. It seems we've legislated away common sense.

We've seen examples of participants getting ahead of themselves and planting an 'offsetting forest' before the off-setting application has been approved. The result? The planting is ineligible as offsetting forest land because the offsetting trees are already in the ground.

In another case a large area of offsetting planting was not accepted because a tiny area (around 1.5ha) was not planted by the contractor because of power lines. Other minor mapping anomalies have seen whole offsetting applications be declined, with regulators claiming no discretion to permit an application to be amended. To be fair, the recent reforms, yet to come into force, have sought to address this, but the regime remains needlessly complex.

Practitioners have also discovered that once filed, a voluntary emissions return can't be amended or corrected, only Te Uru Rākau has the power to do that. A participant realised they'd made a mistake moments after submitting their return and tried to withdraw it. They were not allowed to do so, and they were fined tens of thousands of dollars for filing an incorrect return.

We have seen landowners forced to battle at every turn in a process where there is no certainty and little common sense. Forestry consultants

and lawyers have battled to have cutover land, or land that is unstocked but earmarked for forestry, recognised as forest land, based on the plain words in the Climate Change Response Act. They have also been bogged down with paperwork trying to transfer participation in the scheme following death or change of a land-owning trustee.

From the outside looking in Te Uru Rākau is struggling to appropriately resource for their substantial workload, and with steady competition from the private sector, experienced staff are hard to retain. Participants still regularly experience delays more than 18 months to have their matters progressed. One consultant likened the process to having the IRD scrutinise every detail of every New Zealander's tax return. Things need to change.

Recent moves like proposing further amendments to overseas investment criteria for forestry and seeking consultation around excluding permanent planting of exotic forests from the ETS are further evidence of the 'legislate first, consider consequences later' approach we seem to be taking as a country.

It's no wonder farmers are nervous, confused, and angry.

*Campbell Stewart.  
Partner at law firm  
Tompkins Wake  
Specialist in overseas  
investment, property, and  
the Emissions Trading  
Scheme.*

## NZ FARMERS LIVESTOCK

**For all your  
Livestock requirements  
Servicing the Coast**

*Contact*

**Bryan Goodin - 027 531 8511  
Sheldon Keech - 027 222 7920**



**ASBESTOS REMOVAL**

Providing Safe, Certified and Professional Asbestos Removal for both Residential and Commercial buildings



**021 194 3201**



**SHEDS & GARAGES**

Custom designed commercial & residential sheds constructed & delivered to the highest industry standards, backed by our Professional Guarantee



**027 555 0591**



**www.pepperconstruction.co.nz**  
**06 753 6159 | 027 408 4493**

# Lower Milk Solids Damage Improve Milk Cooling

## MILKFLOW

**The CSL Milkflow Milk Pump Controller improves returns by reducing milk solids damage and optimising primary cooling.**




## ROTARY LOBE PUMP

**Combined with the CSL Milkflow Controller, the CSL Lobe pump accommodates the large wash volumes required in today's dairy sheds without compromising milk quality.**



**Contact us**  
**0800 10 7006**  
[www.corkillsystems.co.nz](http://www.corkillsystems.co.nz)

# M.bovis nearly eradicated

Mycoplasma Bovis which arrived in New Zealand nearly five years ago has been reduced down to a single farm.

It comes after a world-first eradication campaign involving the culling of thousands of cattle, which MPI has described as one of its biggest-ever biosecurity responses. However the Minister for Biosecurity and Agriculture says he can't rule out occasionally finding M. bovis elsewhere in the country.

Fiona Doolan-Noble, Senior Research Fellow in Rural Health, University of Otago, comments:

"It is a real positive that Aotearoa has managed to eradicate this disease over the last five years. There is always a downside to these programmes and in this case, apart from the culling of thousands of healthy animals, the human cost has been significant. We are hopeful that our recommendations we made to the Minister in our ministerial briefing paper would be considered going forward to reduce the psychological trauma this programme caused to many farmers and their families.

"The chances of M. bovis returning are definitely a possibility as we have seen with Covid-19. However



A world first eradication programme has turned the tide on M.bovis.

there is a much greater appreciation across the sector regarding biosecurity, so we would be hopeful that it would be easier to detect should it return, and therefore containment and management would be more straightforward and not so challenging."

Professor Richard Laven, Production Animal Health and Welfare, School of Veterinary Science, Massey University, comments:

"Undetected spread of bacteria already here is clearly a possibility as not all outbreaks have been definitively linked. However as most have been linked, it would seem to be unlikely. In regard to the disease

returning from offshore: as we still do not know how it came in, it is difficult to determine the risk of it coming back. The evidence suggests that it came in via a very low risk pathway, so either our understanding of the risk of those pathways was (and is) wrong or we were very unlucky.

"The evidence from the outbreak shows that disease is very rare so if we want to keep out the bacteria, we cannot rely on identifying a disease outbreak (we were 'lucky' that diseases occurred early on in the spread). This means we will need to continue surveillance permanently – who will pay

for that?

"In any future eradication programme, social science (working with people and approach) needs to be as important if not more so than veterinary science.

"There are other diseases present in livestock New Zealand where the economic return associated with elimination would be far higher than it will be for M. bovis. We should look at putting more effort into eliminating those diseases."

Dr Helen Beattie, Director, Veterinarians for Animal Welfare Aotearoa, comments:

"I am cautiously delighted to hear that provisional

absence of M. bovis has been declared in Aotearoa. The M. bovis Response and then Eradication Programme has faced some enormous challenges along the way, not only due to the nature of the organism itself, but also due to a steep and sometimes bumpy response and then eradication journey.

"Many people across the supply chain, from government to industry leaders, to farmers and their families, to veterinarians, truck drivers, meat workers, and to those developing the response and programme, have been deeply involved and affected by the introduction of this organism.

"Despite some challenges along the way, enormous credit must go to those behind the scenes that have contributed to bringing us to this point - that includes the MPI M. bovis team, those at Wallaceville, and all the amazing social support services that rallied to support what was always going to be a remarkable outcome, should it be achieved.

"It's important to acknowledge also, the extreme distress, and the emotional and financial challenges that have been

part of this eradication, and the loss of many animals for a greater cause. On an individual level, that is extremely difficult to reconcile and accept, and our thoughts should remain with those affected. Reports (e.g. Roche; Paskin) along the way outlined difficulties with the Response that latterly have been addressed by the MPI M. bovis team. Their ability to rally and respond to these criticisms has undoubtedly enabled today's provisional announcement of successful eradication.

"M. bovis is a difficult organism to eradicate – it's hard to find in an animal due to intermittent shedding, it's found in different locations within the animal, it doesn't always produce obvious disease, and before New Zealand's response, robust testing methods were not available.

"Widespread surveillance testing via bulk milk and within the beef herd allows cautious optimism that Aotearoa has achieved a world-first. However, given the nature of the disease, and that it is known to be on a feedlot currently, we must remain cautious until such stage as the final farm is cleared of disease, and long-term surveillance confirms a "freedom-from" status.

# Prolaject™ B12

## POWER PRODUCTIVITY

For the treatment and control of cobalt deficiency in both sheep and cattle.

WIN a

PHILIPS  
Airfryer  
Essential XL

\*RRP \$578

Prolaject B12  
1000 FOR SHEEP AND CATTLE

Prolaject B12  
2000 FOR SHEEP AND CATTLE

For more information see our website or scan the QR code.

VET ONLY

Buy ANY  
Prolaject™ B12  
and be in to WIN!

Terms and Conditions apply.

Prolaject™
Selovin™
Face-Guard™
Coppermax™
Flexidine™

Coppermax™ Capsules, Coppermax™ and Flexidine™ are Restricted Veterinary Medicines (RVM).  
No: A004943, A007789, A007790, A007791, A009469, A007866.  
Only available under veterinary authorisation.

Face-Guard™, Prolaject™ and Selovin™ are registered under the ACVM Act 1997.  
No: A009773, A010198, A010744, A005850, A006170, A006536, A006903, A006139, A009509.

Face-Guard, Coppermax, Prolaject, Flexidine and Selovin are trademarks of Elanco.  
Elanco and the diagonal bar logo are trademarks of Elanco or its affiliates.  
Elanco New Zealand, 106 Wiri Station Road, Manukau, Auckland 2104.  
www.elanco.com | 0800 446 121. © 2022 Elanco. PM-NZ-22-0082

www.prolaject.co.nz



# Dairy farmers urged to breed FE tolerant cows

Facial eczema (FE) is thriving in warm humid conditions across Taranaki, but many dairy farmers are not even aware their herds have the devastating disease, according to local CRV Sales Consultant Anita Scrivener.

New Plymouth based, Anita says Taranaki is an area that feels the effects of facial eczema and she's urging local dairy farmers to use genetics to breed FE tolerance into their herds.

animal in the herd with visible FE symptoms there will be 10 whose symptoms can't be seen. Farmers traditionally use Zinc to treat the disease, but the solution could be as simple as including one FE tolerant sire in your bull pack this season," says Anita.

Anita has had local Taranaki dairy farmers that have been selecting FE tolerant genetics for the last 10 years. They have seen the results of breeding for tolerance and wouldn't go



CRV is urging local dairy farmers to use genetics to breed FE tolerance into their herds



Anita Scrivener.

back. "For them it was a no-brainer, they had firsthand experience of the devastation that facial eczema can cause. The cost of both time and money with vet bills, treatment and lost production can be extremely stressful let alone the ongoing effects on animal health. Utilizing FE tolerant genetics has

given them the freedom to focus on other areas in their operation."

CRV has been selecting bulls for FE tolerance for more than a decade. This work is part of the company's commitment to providing healthy and efficient genetic solutions to the New Zealand dairy industry.

CRV's lead scientist Phil

Beatson says dairy farmers should be considering FE tolerant sires as part of their mating programme so their herds are resilient to FE should the use of zinc become disallowed.

"Zinc is only one tool we have for managing facial eczema, a disease that's likely to become more prevalent as our climate

warms up," Phil says.

"Concerns have grown in Europe about using zinc. It's only a matter of time before the impact of these concerns are felt here in New Zealand, so it is imperative farmers proactively look for alternatives now.

Listen CRV's latest Better Herd Podcast to find out more about facial eczema.

## CRV offers tailored solutions to help unlock your herd's potential.

Make an appointment to meet your local rep and experience the CRV difference.



myDNA



Sexed Semen



Herd Testing



myHERD



AB Services



Bull Teams



Innovative Genetic Traits



## MEET OUR TARANAKI TEAM



**ANITA SCRIVENER**  
North Taranaki / Tariki / Stratford / Midhurst  
021 741 381  
anita.scrivener@crv4all.co.nz



**DERRYN PHILLIPS**  
Stratford / Eltham / Hawera / Kaponga  
021 582 363  
derryn.phillips@crv4all.co.nz



**BROOKE KENNETT**  
Coastal Taranaki / Manaia  
027 499 0162  
brooke.kennett@crv4all.co.nz



**REGIONAL SALES MANAGER**  
**GRANT BACK**  
027 473 2869  
grant.back@crv4all.co.nz

# First time winner would do it again

The decision was unanimous. Angela Hapeta has won her first fight. As reported in the Opunake and Coastal News (May 5) Angela had been training at the Barbwire Boxing Gym under James (Batman) Langton with the assistance of Angela's friend Trish MacKenzie for her first corporate fight against Kylie Northcott to be held at the TSB Stadium in New Plymouth on May 13.

"It was a fluke that Sam (Rapira) asked James if he had someone of a similar weight and a similar age," says Angela. "This wasn't just my first fight. It was my first time in a boxing ring full stop. I had a little jump up and down when I got into the ring. I had no time to practice."

She knew nothing about her opponent except her weight, height and her age. At 43, Kylie was three years older than Angela.



Angela Hapeta is announced the winner in her first corporate fight.

While this was Angela's first time in the ring, she later learned that Kylie had had some previous coaching and sparring experience. "The game plan was for

Ange to come out and dominate Kylie," says James. "So she came out strong from the start."

Angela won all three rounds and took the fight by a unanimous decision.

"She was really really surprised that I could punch," says Angela. "She was really humble in defeat and we've had a couple of chats since."

Trish MacKenzie says she thought it was "definitely the fight of the night."

Angela came to the fight weighing in at 83kg.

"I was 92 kg when they asked me, so I dropped almost 5kg for that, and that was after I already lost 62kg before that," she says. "After seven weeks my left-right was almost automatic."

Angela says that watching the video of her fight afterwards she thought there were things she could have done better like being more patient and taking more

advantage of her longer reach to land more jabs to her opponent.

"I'll give it to her that she's pretty tough. That definitely wasn't her first fight in the ring like it was for me."

Angela says she had been around boxing for a long time and had watched her friends box.

"It had been something I'd always wanted to do, but I'd never been physically able. So I got myself into a position where I was physically able."

Having won her first fight she says she would happily do it again.

"I definitely enjoyed it, and I didn't get as tired as I thought I would be," she says.

In the meantime she is helping organise the Coastal Rumble on July 2 which will see Trish MacKenzie's professional debut against Ayisha Abied.

## A family affair at Warea



From left Michael, Lochlan, David. Three generations of Warea bowlers in the same family.

Warea is one of the last remaining Indoor Bowls clubs along the coast. We are a family oriented club and this year we have three generations of the Cavey family playing. David who started playing at 10 for Warea, David's son Michael started at 10 and just joined

(8 years). David's parents Margaret and the late Les also played for Warea in the past. We have had other families like the Sharpes with three generations playing together. It is nice to celebrate these achievements at this day and age.

Maria Van der Poel

**NEW SHED** An exciting development in Value Farm Sheds.

We've been building quality Farm Sheds for over 50 years. Now we have this exciting new option: Clearspan Sheds. You can get an estimate + the plans simply by giving us a call!

**VALUE Building Supplies** | **BuildLink Buy Better Build Better** | **1 KATERE RD, NEW PLYMOUTH PH: 06 759 7435 EXT: 715** | **JAMES STREET INGLEWOOD PH: 0800 245 535 www.valuebuilding.co.nz**

**Sinclair Electrical are your heat pump specialists**

Call today for exceptional service and a warmer home this winter!

**SINCLAIR Beta ELECTRICAL**

**SINCLAIR ELECTRICAL & REFRIGERATION**  
31 Tasman Street, Opunake  
Phone: 06 761 8084

**BARBWIRE BOXING & FITNESS**

Congratulations to Angela for her victory over Kylie. Best of luck to Amber Thomas vs Zoe Bewley this weekend at Trentham, Wellington.

Crossfit and one-on-one training available  
Contact: 027 469 2912

# COASTAL RUGBY



**Proud to sponsor  
Coastal Rugby**

**GOLD SPONSORS**

**CALL TODAY  
06 757 4483**

The smarter plan for a new home



**Proud to be supporting  
COASTAL RUGBY**

**Boehringer  
Ingelheim**

## A win to start the season

Well finally the 2022 season got under way at Yarrows stadium vs Spotswood United.

After our pre-season game a week earlier we were a little nervous coming up against Spotswood as they are capable of anything.

With a skeleton crew we took the field with no fresh reserves on a beautiful sunny day not suited for tight forwards. We got straight into our work and scored two well worked tries, one from a line-out drive to Beni Kalin to lead 10-0.

Spotty then scored a converted try to narrow the gap to 10-7.

There was plenty of ball movement in the game a lot of straight running and we managed to take a halftime lead of 17-12.

The second half was very pleasing for us. We kept Spotty scoreless and added three more tries one to Logan Crowley another to the powerful running Shamus Hurley-Langton and unfortunately the other to captain fantastic and new dad Jeremy Newell to give him two for the day.

It seems cruel to single out too many guys as everyone who took the field played very well and gave it 100%.

Shamus was our POD and

it was thoroughly deserved. His run metres were amazing and the defenders beaten ball in hand would have been up there.

Young crew Harry Foreman, Matthew Picard, Jackson Sinclair, Jeremy Gopperth, Morne Pistorious, Kobe Sinclair and Taumauru Hond all played outstandingly and show Coastal still have plenty of young talent coming through, the last four named making their Prems debut and we congratulate them for that.

Also with five Kalins involved in the team it was a good effort, and the three Barb and Willys boys from the high veldt a nice touch, all gutsy guys who added a lot to the top two teams.

Mark Martin deserves mention. He played a strong first half, held the scrum up very well and then had to shoot off to milk, much appreciated. Liam Hurley came back from the div 2 game in Kaponga to reserve for us and played the last 20.

It was a solid start to our season but we have a lot of work on..

All 23 got on, and it was an entertaining game well officiated by Will Johnson.

I would like to mention the Div 1 and 2 and under



**Jeremy Newell pictured with Logan Crowley Celebrated 150 games for Coastal against Tukapa on the 14th May.**

20s boys. What an amazing effort to field teams. This was a huge achievement by everyone concerned. We are struggling for numbers across all teams so anyone wanting to play with a great group of guys get down to Rahotu training at 6pm Tuesday and Thursday nights.

The club and the boys love having our supporters

along and we look forward to seeing you all throughout the season.

Lastly Heiny had a bad health scare on Tuesday night at training. We wish you all the best mate to you all your family, you are a highly valued member of our club and look forward to seeing you on the sidelines in the coming weeks.

Ride the wave

**BRIAN HILL  
BD HILL BUILDING**

0274 442 703

**PIONEER**  
BRAND · PRODUCTS

South Taranaki Pioneer Area Manager:  
Kim Sharpe 027 528 0012

North Taranaki Pioneer Area Manager:  
Alan Bunning 027 206 0147

**COASTAL AGRI SERVICES**  
Our Promise... "PEACE OF MIND"

97 TASMAN ST, OPUNAKE PH 06 761 7079

FARM & LIFESTYLE SALES

**ASK4JB**

JOHN BLUNDELL ☎ 027 240 2827

**Coastal Vets**  
Coastal  
Veterinary Services  
Ph 06 761 8105

**ECOLAB**<sup>®</sup>

Proud sponsors of Coastal Rugby  
CHRIS STANDING - 021 791 246

**NEWTON GORDGE JOINERY**  
2016 LTD

67 Breakwater Road, Motorua  
Phone 06 751 5065

**NEWTON GORDGE JOINERY**

**NZ FARMERS LIVESTOCK**  
For all your Livestock requirements

Contact  
Bryan Goodin - 027 531 8511  
Sheldon Keech - 027 222 7920

**CRAIGS**<sup>™</sup>  
INVESTMENT PARTNERS

1st Floor, 9 Young St, NP  
newplymouth@craigsip.com **06 759 0015**

**butlers reef**  
OAKURA · EST 1865

1133 Main South Rd, Oakura  
Ph 06 752 7765  
www.butlersreef.co.nz

**PRIMO**  
YOUR BROADBAND SPECIALISTS

**GO LOCAL - SWITCH NOW**  
0800 123 774 | www.primo.nz

**GOLD SPONSORS**

**Coastal Meat PROCESSORS**  
www.coastalmeats.co.nz

Phone: 06 752 4280  
027 752 4280

**Peter Moffitt**

**FarmWise®**

Ph: 06 751 1265 - Mob: 027 242 1812

0800 100 123

**ravensdown**

Smarter farming for a better New Zealand

**Young Carrington + Ussher Lawyers**

Proud Sponsors of Coastal Rugby  
LAWYERS FOR THE COAST  
Thank you for your support  
**06 758 9484**

**McDonald Everest**

INSURANCE BROKERS LIMITED

Proud Sponsors of Coastal Rugby  
158 Powderham Street, New Plymouth  
Ph: 06 758 1199 Fax: 06 758 1188  
Members of the Independent Insurance Brokers Assn.

**BDO**

06 759 9034

**MineralBoost**

ACCURACY COUNTS

027 558 9004



**COASTAL RUGBY**



Proud sponsors of the Coastal Division 1



For Spreading, Fertiliser, Lime and Log Cartage  
SUPPORTING THE COAST FOR OVER 50 YEARS! Opunake 761 7341 - Okato 752 4124

**Jeremy's 150<sup>th</sup> game**



Jeremy Newell crashes up the ball with Dylan Schuler and Taumauru Hond.

For our first home game of the season we hosted a very strong NPOB side fresh off a narrow loss to Tukapa and bolstered by the return of Chiefs players Bradley Slater

and Kalum Boshier. It was Jeremy Newell's 150th appearance for the Coast so the boys were looking forward to a strong performance to honour him.

Coastal came out hot playing into a stiff breeze and after five minutes we were 7-0 up after a well worked try to Shamus Hurley-Langton.

For the rest of the half OB dominated in territory and possession and scored three well worked tries and a penalty to lead 22-7 at the

Continued Page 29



**PROUD TO BE SUPPORTING COASTAL RUGBY WOMEN**



Proud Sponsors of  
- Coastal Division 2 Team  
- The Coastal Rugby Club Farm



**SANDFORDS**  
RURAL CARRIERS

Proud to support Coastal Rugby



BRUCE THOMPSON  
FREEPHONE 0800 654 779  
MOBILE 027 4455 285



Rusty: 027 280 0743



29 Norwich Ave, Spotswood, New Plymouth  
Phone: 022 031 5072



# COASTAL RUGBY



**Proud sponsors of Coastal Rugby**  
 5 Tasman Street Opunake, Taranaki  
 PHONE 06 761 7531 - 0800 107006

Continued from Page 28  
 break .

Turning with the wind we didn't get the required possession needed to get us into the game, and with our team under constant raids from OB, we were looking a big score against us at 36-7. Luckily the boys sparked into life in the last 20 and got some continuity and a lot more direct running by Shamus ,Jeremy Newell and replacement mid fielder Sean Mare.

We managed to get some respectability into the game and get two tries, one to powerhouse Shamus and the other to midfielder and angry man Daniel Crowley to make it a final score of 36-19 after Jackson Sinclair kicking nicely at goal, but a very deserved win to NPOB .There were a lot of learnings for Coastal. The front row of Hond ,Foreman and Picard would have gained great experience against a Taranaki front row and they toiled very hard along with the rest of the pack, Beni Kalin was into everything and Shamus once again had his moments and was our player of the day for the second week in a row.

In the back division Logan Crowley was sharp at 9 and was under pressure,

not making it easy for him, and Jeremy Gopperth at 15 played very well and put in a tidy display.

Chris Gawler made an impact when he came on. It was good to see him back out there.

Mark Martin once again impressed. After a full 80 for div 1, he played another 30 for us, and Sean Mare was in the same boat when replacing Kobe Sinclair after a high shot causing a nasty concussion.

It was a tough weekend for the club but once again it was made harder by player numbers. We thank all teams for pulling together to get teams on the field and it's not easy with some guys playing big minutes, but the women were the highlight of

the day with a 22-all draw with Clifton

Unfortunately for Jeremy Newell we couldn't get a win in his 150th match but it wasn't through lack of effort .

Jeremy is the backbone of our team. A real leader, he always speaks well and his can-do attitude is awesome to have in our club and team.

He wears his heart on his sleeve and travelled over 40000km to training alone and a couple of ops on his knee to make this milestone, and to him and his family it's a huge achievement, we congratulate him, and the boys promise a win in your 200th match in the future.

Good to hear Heiny is on the improve and things are going well. It will be good to

catch up when he's back.

Lastly I would like to thank the NPOB club who donated money to the Coastal Legacy Fund for injured players or to help people doing it tough health-wise in our Coastal community .

If you will like to donate to the fund please do so using bank account number 15-3952-0402836-02. If we can get at least a \$1 month or a figure you're comfortable with going to the fund on an automatic payment it will help makes people's lives a little easier.

Tukapa next week at Rahotu. Get along and support the teams and club and have a fun day at the footy.

Ride the wave.



Coastal Division 2 suffered a loss 70-7.

## GOLD SPONSORS



**POWERFARMING**  
 HAWERA  
 CALL US 06 278 0240



**Carrfields**  
 CONTACT  
 Tim Hurley 027 414 6756  
 Daniel Crowley 027 215 3609



**John & Jacinta Hurley**  
 NEW PLYMOUTH  
 INGLEWOOD  
 STRATFORD  
 HAWERA



**Pennington Consultancy**  
 ACCOUNTING AND TAX  
 Call us on 06 281 1565 or 027 4542 284  
 62B Carthew St, Okato



## BLUE RIBBON SPONSORS

**Simpsons Tyres and Service Centre**  
 22 Leach Street - New Plymouth  
 Ph: 06 758 0780 29

**BTW COMPANY**  
 SURVEYING | ENGINEERING | PLANNING & ENVIRONMENT  
 179 Courtney Street, NP | 0800 BTW Survey (0800 289 787)

**PICKERING MOTORS**  
 PH: 06 761 8363 - Tennyson St - Opunake  
 GO COASTAL!

**Elite FARM SOLUTIONS**  
 23 Tasman St, Opunake  
 06 761 7265

**Hareb Deken Motors**  
 331 St Aubyn St, NP - Ph 0800 289 493 or 06 759 9957

**Firstgas**

**Eftpos Specialists (Taranaki) Ltd.**  
 113 Gill St - 06-759 4148

**PH HONDA HUB TARANAKI**  
 06 757 3612 NP | 06 278 5972 Hw

**VALUE BUILDING SUPPLIES**  
 1 Katere Rd, New Plymouth  
 Ph 06 759 7435

**Coastal Rugby gratefully acknowledges their support sponsors**  
 B & R Barron Builders      Rahotu Service Station  
 Coastal Printers              Mason Homekill  
 Opunake Coastal Pharmacy

**HCL Builders**  
 Heartland Construction Ltd  
 Contact Phill - 027 236 7129

**SINCLAIR ELECTRICAL & REFRIGERATION**  
 sinclairelect@xtra.co.nz  
 Opunake 761 8084      Okato 752 4084  
 Kaponga 764 6084      Manaia 274 8084

**ADM**  
 Supporting Taranaki farmers and proud to be in the scrum with Coastal Rugby!  
 Grant Gibson 027 528 8511 | admnewzealand.co.nz

# Kendra Cocksedge turns out for Coastal

Arguably one of New Zealand's most outstanding women's rugby players of this century, Kendra Cocksedge MNZO finally played for Frontrunner Coastal Women's team, something she has always wanted to do. Last time she played for Coastal it was as a youngster at primary school, aged "9 or 10" (she said). The opposing team, on Saturday May 14, were the Clifton Women's team and the final score was 27-27. The referee was Dee Luckin. He used to be her coach when she played inter-school rugby.

The Coach is Toka Walden with Jalana Smith and Pip Collins the managers of the Frontrunner Coastal Women's team.

An important reason as to why Kendra played last Saturday was to pay tribute to her nephew Jordy Adams (aged 18), who died in the Waiwhakaiho River in November, 2021. Jordy played for the Coastal Colts.

After the game, which was held in Rahotu, Kendra said, "It was special to come and play for Coastal." A feature of her excellent play were the many crunching tackles



**Back:** Ella Griggs, Zoe Kensington, Carmen Rutland, Crystelle Deegan, Jaymi Ngaia, Tiffany Nuku, Toka Walden (Coach), Megan Cloke, Charlotte Webby, Aroha Nuku, Piri, Chapman, Michael Griggs (assistant coach)  
**Middle row:** Nicole Whittle, Maya Norgate, Victoria McCullough, Miriama Deeken, Shevaughn Polata  
**Kneeling:** Aaliyah Kere-Rako, Sharna Tito-Green, Beth Cook, Meme Manson, Sammy Cooper, Brooke Sim, Tash Hintz  
**Front:** Kendra Cocksedge.

award) was pretty special for my family after all the hard work and sacrifices they made for me," commented Kendra.

Kendra usually plays as halfback but can also be

the year. She has scored 352 points for the national team.

In 2021 she was announced a Member of the New Zealand Order of Merit for her outstanding services to rugby.



Jordy Adams on the charge against Tukapa last season.

she made on players of the other team.

Her next challenge is playing in the New Zealand team three tests against the USA and Canada in June, she explained.

In one way Kendra is something of a pioneer in NZ rugby, as she is the first woman player to win NZ Rugby's Supreme award the Kelvin R Tremain Memorial Award, which was named in honour of the late All Black great of the 1960s and 1970s. She won the prestigious award in 2018 at the Annual NZ Rugby Awards beating such All Blacks as Brodie Retallick (Formerly named top rugby player in the world), Richie Mo'unga and Codie Taylor.

effective at first five eights, if required. She is 5-2 and weighs 64kg.

She first came to notice as a talented rugby players while a teenager and was selected for the Taranaki and the Hurricanes Secondary School teams.

She was just 19 when she made the Canterbury team, while she was studying at Lincoln University. She has scored an impressive 504 points for the Canterbury team.

As a Black Fern she was in the winning team when they won the Women's World Cup in both 2010 and 2017. The year 2015 was notable as she was named NZ Rugby Player of the Year the World Women's Rugby Player of



Kendra on the charge against Clifton and referee Dee Luckin.



About to feed the scrum, Frontrunner Coastal women drew with Clifton 27-27.



The cast: Standing - Hayden Baylis, Richard Baylis, Deb Thomas, Shaun Campbell, Emily Davidson, Cody Ogle, Regan Tate, Aries Poutu.  
Sitting - Paula Frearson, Sarah Bird. Absent, Samantha Hatcher, Tayla Steele.

# Mamma Mia is coming

It's not long until June 11 when Hawera Repertory's *Mamma Mia* opens. This show is building up to be one of Hawera Repertory's best. With a reputation for producing top quality shows for over 75 years, and known for investing in the best of sound, lighting and set elements required for high end musical theatre, the society attracts a high calibre of auditionees for their shows. *Mamma Mia* has once again has proven this allure; The stars have certainly aligned with the *Mamma Mia* cast. Musical director Charles Pittams is extremely pleased with how the entire cast has grasped the music and has said "it's not easy music to learn and has many layers and parts".

The leads in this show are a mixture of both newer and experienced players. Playing Donna is Paula Frearson from

Manaia. Paula has performed in one previous Hawera Repertory show, *Through the Decades*, but is no stranger to the stage, having sung for both her Church and Kapa Haka. Paula is a singer that captivates other singers and audiences alike.

Supporting Paula as Donna's best friends and completing the girl power trio 'The Dynamos' are Emily Davidson and Deb Thomas. Emily, playing the role of Tanya, has been in both musicals and plays for Hawera Repertory. Emily recently sang as Grace in *Annie*, and was also in the recent play *Love Begins at 50*. Deb Thomas, playing the role of Rosie, has been in many musicals and has played the lead Audrey in *Little Shop of Horrors* and more recently played Lilly St Regis in *Annie*.

These three ladies have a blend of voices and chemistry that will be worth the ticket

price alone.

Playing Sophie is Sarah Bird. This is Sarah's first major musical, but she has shown great ability in rehearsal and will partner well with Regan Tate who is playing Sky. Regan is from New Plymouth and has appeared in *The Full Monty* and *The Rocky horror Picture Show* in New Plymouth.

Of course, *Mamma Mia* needs three fathers, and playing one of the prospective dads is Richard Baylis who plays Bill. Richard was most recently Mr Warbucks in *Annie* for Hawera Repertory. Joining him in the cast is his brother Hayden Baylis, who is Sam. Whilst you may not have seen Hayden on stage in a major role, you may have heard him as he was the voice of Aslan the lion in *The Lion, The Witch and the Wardrobe*.

Rounding out the dads is very well-known local musician and music teacher Shaun Campbell, playing the role of Harry. Shaun has been in musicals, such as *Le Miserables* in New Plymouth (twice) and also Hawera Repertory's *Oliver* as Fagan. Shaun has also directed major musicals,

*Little Shop of Horrors* and *Annie* for Hawera Repertory.

Playing the friends of Sophie are Samantha Hatcher as Lisa and Tayla Steele as Ali and supporting Sky are Cody Ogle as Pepper and Aries Poutu as Eddie. Look out for these four newcomers as they bring their youthful vitality to the stage.

No musical is possible without an ensemble, and the group for this show is incredibly strong. They have been put through their paces by the show's choreographer Greer Anderson, who is from New Plymouth. Greer has challenged the ensemble and leads, and they have met the challenge. The ensemble has some experienced rock steady members and some future rock stars amongst it.

So, what can you expect from Director Clive Cullen's *Mamma Mia*? Well for a night at the theatre you will get it all - an often-poignant story with some great twists and plenty of laughs. You will also get more than twenty foot tapping Abba songs, sure to bring a smile to your face. You will know more songs in this musical than any other

and will find it difficult to not sing along with the cast as you are drawn into the experience of *Mamma Mia*.

*Mamma Mia* will be performed in the Hawera Memorial Theatre, which is a full-scale theatre, yet every seat is close enough to see it all unfold before your very eyes.

Tickets can be found online at i-ticket and also from the Hawera i-Site. The show runs from 11 - 25 June.

Having seen and heard some snippets from the show in rehearsal, the best advice I can give you is: don't miss it.

Ben Thomas

Local news, local people, local businesses, local sport, local arts and events.

Delivered free around the mountain every fortnight.



editorial@opunakecoastalnews.co.nz  
ads@opunakecoastalnews.co.nz  
accounts@opunakecoastalnews.co.nz

Phone: 06 761 7016

23 Napier St, Opunake

**OPUNAKE & COASTAL NEWS**

## DP PLUMBING

Craftsman Plumber/ Drainlayer  
Living locally in Okato

23 years experience  
Competitive quotes and prompt service  
Ph Duane on 021 023 05021



## POWERLINE FAULTS AND SERVICING

From a fuse or broken insulator replaced to a complete powerline rebuild

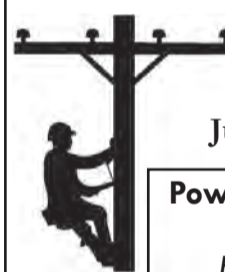
Call: TOP OF THE LINE

ELECTRICITY SERVICES

Greg Lewis: 027 453 0326

Justin Robinson: 027 445 9162

Powerline Servicing Specialists  
Free line inspections  
Free advice | Free quotes



## SAVVYGAS

PLUMBING AND DRAINAGE

### OUR SERVICES

SERVICING NEW PLYMOUTH AND TARANAKI WIDE

- HOME HEATING • DRAINAGE • PLUMBING
- ROOFING • GAS FITTING

Any job, we will get it done on time in budget

Call Us 06 765 5336

Email Us info@savvygas.co.nz

www.savvygas.co.nz



## ALUMINIUM JOINERY



- Windows
- Bi-Folds
- Sliding Doors
- Entrance Doors
- Conservatories
- Garage Doors
- Inserts/Retro Fitting

Call today for a free measure and quote

IN YOUR AREA EVERY WEEK.

Ph: (06) 758 8073

Fax (06) 758 4157

Email: sales@rylocknp.co.nz

Web: www.rylock.co.nz

## IHAIA MOTORS

for A GRADE REPAIRS

- Tyres
- Batteries
- Lubes
- W.O.F
- Panel beating
- Painting
- Farm Bikes
- LPG
- All mechanical repairs
- Insurance work
- Radar Detectors

AT COMPETITIVE PRICES.

Tasman St, Opunake  
Ph (06) 761-8502

W.O.F. • Mechanical Services • Engine Services  
General Repairs • Dashboard warnings  
Diagnostics • Punctures  
Batteries • Floats • 2 +  
4 Wheelers • Contracting  
Equipments • Mowers  
Trailers • To • ing • Heavy  
machinery • hed repairs  
Pipework • Mechanical  
Services • Eng • eral Repairs  
Dashboard warnings • Diagnostics • New Tyres  
Punctures • Floats • 2 +  
4 Wheelers • Contracting  
Equipments • Mowers  
Trailers • To • ing • Heavy  
machinery • hed repairs  
Pipework • Mechanical  
Services • Eng • eral Repairs

## The Garage JSME

AUTOMOTIVE + ENGINEERING  
1759 South Road • TATARAIMAKA  
027 4416 330 • 752 4933 • www.thegaragejsme.co.nz



Free measure and quotes available

## CARPETS

WHOLESALE & RETAIL

NEW PLYMOUTH:

06 758 9187

319 DEVON STREET EAST

HAWERA:

06 278 7126

5 GLOVER RD

# The Village Gallery/ Eltham Autumn Members' Exhibition

Tuesday 10 May - Friday 3 June 2022

Our latest exhibition opening on Tuesday 10 May encompasses new artworks from the friends of the Village Gallery. This is always a mixed bag of media and styles - and unquestionably produces

something that will impress or inspire the viewer. Paintings, photography, sculpture and mixed media works feature by our regular members and by our newest members - Therese Gale-Mancer, Margaret Street, and Glenys Howland. Our regular artists

include Margaret Foley, Donna Hitchcock and Robyn Smaller with their quirky pottery and mixed media; Tony Waterson's beautiful wooden clocks, Yvonne Geeraedt's delicate watercolours, Rodney Dunlop's watercolour and acrylic landscapes, Maree Liddington's woven wallhanging and knee rug, as well as Sue Morton's and Libby Hogg's photography. Too many to mention everybody individually.

Our artists are finding it increasingly difficult to find opportunities to exhibit their efforts in art spaces. We need to encourage and support them for all of their hard work and creativity.

In these times of separation



Painted by Sue Morton.

from out of the blue studio gallery

18 Halse Place, Opunake  
Ph 021 407 424

Open Thursdays to Mondays 1 - 5 pm or by appointment.

The current exhibition "More than a Feeling" - works by Jess Moughan and Jan MacNeil finishes on Monday May 23.

Next exhibition: 26th May - 4th July is Wendy Watson and 2 friends in "Call and Response".

<https://www.facebook.com/silktangles>

<http://fromoutofthebluestudiogallery.com/>

Call us on 06 761 7016

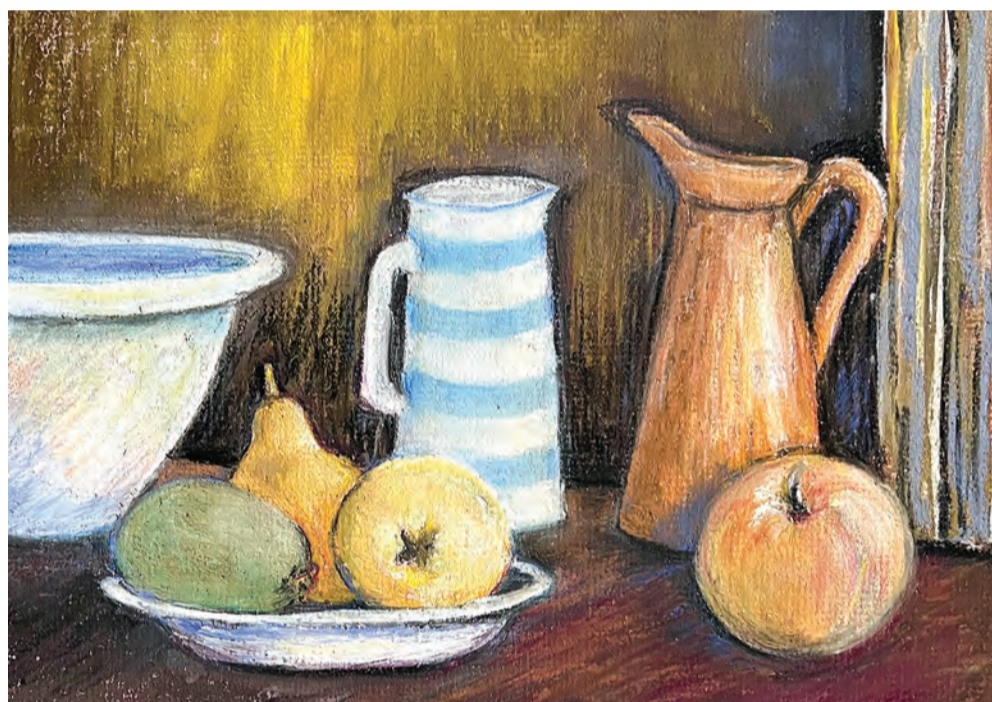
TO SEE HOW THE

OPUNAKE & COASTAL NEWS

CAN HELP YOUR ADVERTISING REACH YOUR TARGET AUDIENCE

FOR ADVERTISING THAT WORKS

OPUNAKE & COASTAL NEWS



Painted by Lorna Davies.

and disagreement it is important groups like the Village Gallery keep the path open to community sharing and cooperation coming together in creation and celebration of culture. The cement in our society relies on groups remaining in contact and sharing interests and supporting each other in these troubled times. So make sure you show your support by visiting the gallery and stop for a moment to absorb and reflect on the ideas and inspiration presented by these individuals.

Also our winter hours are: Tuesday - Friday 10.30 am - 2.30 pm. Saturday 10.30 am - 1.00 pm.

Sue Morton



Painted by Karen Waterson.



Painted by Lorna Davies.

## "Legends" Day at Egmont Racing Club

The Egmont Racing Club second "legends" raceday is happening this Saturday May 23<sup>rd</sup> at Hawera Racecourse. Alongside the Sponsor's name are eight top quality Hawera trained racehorses and this year they include Wellington Cup upset winner Simon de Montford, XXXX Cup winner DoubleYou em, good marer Bridie, Copper Weave plus sprinter Tee Pee Gold.

Club Manager Carey Hobbs stated "it's a good tribute to some of the great horses from yesteryear trained at Hawera and the old timers love it."

Racing starts at 12.15pm and admission and Members stand are free.

EGMONT RACING CLUB LEGENDS DAY FREE ADMISSION  
Gates open 11am First race 12.15pm



Sunday May 22, 2022

Join us for a day of action-packed racing

THE VILLAGE GALLERY ELTHAM presents MEMBERS' AUTUMN EXHIBITION 10 may - 3 june 2022



KAREN WATERSON

LORNA DAVIES

THE VILLAGE GALLERY 166 HIGH ST/ ELTHAM

WINTER HOURS: TUES - FRI 10.30 - 2.30 SAT 10.30 - 1.00

**Carrfields**

COASTAL MACHINERY SALE

Rahotu Tavern carpark and lawn

Friday 3rd June 11am

Various farming items to be auctioned

TAKING ENTRIES NOW

CONTACT:

Tim Hurley 027 414 6756

Daniel Crowley 027 215 3609



# Stiff at Opunake Players

Stiff is Opunake Players first production for 2022, and is written by New Zealand playwright April Phillips. Other works by her to have been seen at the Lakeside Playhouse have been Blue Eyes and Last Dance. The director is Alexandra Lawn. More used to being on stage, Alexandra is stepping off the boards for the first time.

"I'm really excited about directing Stiff," she says of her new role. "A great script, a hard working cast and crew, the right ingredients for a good show. I can't wait

for Opunake to see this kiwi classic."

So what's it about? To answer that, I can do no better than quote the blurb. "Angel Delight, the illegitimate daughter of a funeral parlour director, inherits the business when her father dies. Before she can sell the business and the land, she has to continue to run the business as a funeral parlour for a further five years. Unfortunately she knows nothing about the funeral business but a lot about prostitution. Suspenders,

death by misadventure and unorthodox embalming techniques feature in this hilarious quickfire comedy. Rude not crude, cheeky not vulgar, it's a modern farce with lots of great characters." "It's not for the uptight and unfortunately not for the younger crowd," adds Alexandra.

The cast consists of some seen at the Playhouse before plus some newbies. Christine Ryan, Michelle Julian, Elaine Spencer, Monica Willson and Lynelle Kuriger will be familiar to Opunake

audiences. Sherrie Flanagan, better known as a singer, takes on her first acting role while Ethan Smith moves from the lighting box to the stage. Blair MacBeth, who took part in the 48 Hour Challenge, completes the cast. This writer has been to a rehearsal and spent a lot of time laughing. I couldn't but help notice the chemistry among the cast as well. Looking forward to the show.

Stiff by April Phillips, directed by Alexandra Lawn will be at Opunake Lakeside

Playhouse from June 23 to June 26, then June 30 to July 3. Tickets available soon, watch this space or

look out for posters around Opunake.

Paul Anderson-Gardiner.

Opunake Players presents



STIFF by April Phillips  
Directed by Alexandra Lawn  
Show dates 23 June - 26 June  
& 30th June - 3rd July 2022

# NPDC Winter Festival lights up central city for Māori New Year

The stars are aligning for NPDC's first ever first TSB Festival of Lights Winter Pop-Up on between 23 and 26 June, coinciding with the start of the Māori New Year.

The free festival courtesy of NPDC, features four evenings of spectacular lights around the Huatoki Plaza to the Coastal Walkway in central New Plymouth, accompanied by live performances, kai and whānau-friendly entertainment.

In addition to the Winter Pop-Up, Ngāti Te Whiti will lead a dawn ceremony to commemorate the rise of the star Puanga, an important time in the Māori calendar. Taranaki iwi observe this time of year as Puanga, while others recognise it as Matariki.

This year is the first time the Māori New Year, or Matariki is celebrated as an official public holiday in Aotearoa.

New Plymouth District Mayor Neil Holdom says it will be a great event for all to enjoy after a tough couple of Covid-impacted years.

"We've been working with mana whenua to light

up the central city during this special time of Puanga or new beginnings, after the sadness of not holding our iconic TSB Festival of Lights due to Covid.

"This free event courtesy of NPDC will light up our central city for all to enjoy, with a mix of light features and top notch entertainment," says Neil Holdom.

The full entertainment

line-up and lighting trail details will be announced in the coming weeks at festivaloflights.nz

### Fast Facts

- Puanga refers to the celebration of the Māori New Year, observed by Taranaki iwi which happens in June or July. Other iwi refer to this celebration as Matariki.
- The winter pop-up

festival will illuminate the central city with 8 lighting features.

- The lighting and entertainment line-up will feature both local and national artists.
- 125,000 people annually enjoy the NPDC backed free summer festival held in Pukekura Park.
- This is the first time this event is held entirely in the New Plymouth central city.



Burrow by Angus Muir, which will feature in the TSB Festival of Lights.



**TARANAKI RUGBY COCKIES CLUB 2022**

Rugby and farming go hand in hand and at Taranaki Rugby, we invite you to become a part of the legacy. Donate a cull cow to become a member of the TRFU Cockies Club.

The Cockies Club is a group of members from the rural community who donate a cull cow(s) to their chosen meatworks with proceeds going to support the development of the local rugby talent in the region. In return of a cull cow, donors receive a Cockies Club Membership Pack for the 2022 Taranaki Bulls NPC Season.

Per donated cull cow, you will receive:

- 2 x grandstand tickets to every home game
- 2 x pre-event corporate hospitality passes (off site)
- Taranaki Rugby Merchandise
- Recognition as a member on trfu.co.nz

To register or to find out more, please contact Commercial Operations Lead, Alice Marshall on [alice@trfu.co.nz](mailto:alice@trfu.co.nz) or 0278572067.

**EVERYBODY'S THEATRE OPUNAKE**

72 Tasman Street, Opunakē - [www.everybodystheatre.co.nz](http://www.everybodystheatre.co.nz) - Phone 027 383 7926

May 2022  
Adults \$10, Students 4-16yrs and Senior Citizens \$8, Under 4 free

<p><b>DR STRANGE – MULTIVERSE MADNESS</b> Action, Fantasy   2hrs 7mins   M: Violence Fri 6<sup>th</sup> May 7pm   Sat 28<sup>th</sup> May 7pm</p>	<p><b>CINDERELLA AND THE LITTLE SORCERER</b> Animated, Family   1hr 31mins   PG Sat 21<sup>st</sup> May 1pm</p>
<p><b>HELMUT NEWTON</b> Documentary   1hrs 33mins   M: Nudity Sat 21<sup>st</sup> May 7pm</p>	<p><b>A BUGS LIFE</b> Animated, Comedy   1hr 35mins   PG Sat 28<sup>th</sup> May 1pm</p>
<p><b>NOBODY HAS TO KNOW</b> Drama   1hr 39mins   M: Language Sun 22<sup>nd</sup> May 7pm</p>	<p><b>THE VELVET QUEEN</b> Documentary   1hr 32mins   M Sun 29<sup>th</sup> May 7pm</p>
<p><b>DOWNTON ABBEY: A New Era</b> Drama, Romance   2hrs 5mins   M: Language Thur 26<sup>th</sup> May 7pm</p>	<p><b>ONE OFF SCREENING – MADAM SARA</b> Thursday 2<sup>nd</sup> June 7pm The women known as <i>Madam Sara</i> in Haiti work tirelessly to buy, distribute, and sell food and other essentials in markets throughout the country</p>
<p><b>TOP GUN: MAVERICK</b> Action, Drama   2hrs 11mins   M: Violence Fri 27<sup>th</sup> May 7pm</p>	<p>The Madam Sara documentary tells the stories of these indefatigable women who work at the margins to make Haiti's economy run</p>

**SPECIAL SCREENING ONE OFF – THURSDAY JUNE 2<sup>ND</sup> 7PM**

**COASTALCARE**  
Haumarū ki Tai - Health and Community Centre

**LOCAL HELP**  
OUR PLACE OUR PEOPLE  
NAU MAI, HAERE MAI

SUPPORT FOR INDIVIDUALS AND FAMILIES IMPACTED BY ALCOHOL AND DRUG ABUSE

CoastalCare welcomes  
**Manuka Matthews**  
Addictions Practitioner

Manuka will be available for appointments at CoastalCare every Monday!

PHONE: 027 239 5896 or [waitara06754@gmail.com](mailto:waitara06754@gmail.com) - Facebook: 4WAITARA

**DID YOU KNOW?**  
CoastalCare offers for hire, quiet, private, well-appointed room's for meetings, training opportunities and social gatherings.

Permanently residing in the building are:  
OPUNAKE PHARMACY  
OPUNAKE MEDICAL CENTRE,  
ST. JOHN AMBULANCE, PLUNKET,  
TARANAKI DHB SERVICES,  
COASTAL PRINTERS

What's On Listings

GLOSE COMFORT



BRETECHER

ONGOING

**Movies at Everybodys Theatre in Opunake:** Playing several days and nights each week. Refer timetable in newspaper.

**MONDAYS:** Tainui Day Centre - St Barnabas Church Hall, 141 Tasman Street Opunake: Each Monday 10 am - 12:230 pm. Information call Jenny 7618080 or Glenys 6558025

TUESDAYS

**Opunake Walking Group:** Every Tuesday 10am. Meet outside Club Hotel on Havelock St. Phone Margaret 027 477 5600 for more info if needed, or just turn up.

**Life Drawing Group:** Weekly at the Emporium, 86 Tasman St, Opunake 7pm to 9pm. \$10 to pay for the model. If anyone is interested please call Marianne Muggeridge on 06 274 5713.

WEDNESDAYS

**Lisa Keen Audiology at Coastal Care, Opunake:** Wednesdays 9am - 5pm, for an appointment call 027 591 4222 - 0800 555 676

**Okato & District Historical Society open every Wednesday:** At the Okato Community Trust Hall, 47 Cumming St, Okato. phone Meg on 06 752 4566.

**Opunake Embroiders Guild:** Meet 2nd and 4th Wednesdays of the month, 10.30am-3pm at the Opunake Business Centre, Napier St, Opunake. Just come along or phone Sheryl 06 761 8769.

**Okato Market:** In Hempton Hall, Okato 4.30 to 6.30pm.

**Free singing experience with Taranaki Harmony Chorus:** Meet every Wednesday at Inglewood Mamaku Centre, 7-9.30 pm Phone Helen 021 296 0700.

THURSDAYS

**Coastal Young Farmers:** Meet 2nd Thursday of every month at 7pm at Butlers Reef Bar & Cafe, Oakura.

**Taranaki Country Music Hall of Fame, Manaia:** Running every Thursday night from 7.30pm, 11 Surf Highway, South Road, Manaia.

FRIDAYS

**Eltham Business Association Friday Markets:** 9:30am to 1pm, Carpark of Touch Point, High Street, Eltham.

**Singer Songwriters, New Plymouth:** Last Friday of the month at Little Theatre, 29 Aubrey St, NP from 7-11pm.

WEEKENDS

**The Historic Cape Light & Museum:** Open 11am - 3pm weekends, Bayly Road, Warea.

MAY 10 TO JUNE 3

**Members Autumn exhibition:** At the Village Gallery, Eltham.

MAY 22

**Egmont Racing Legends Day:** Hawera Racecourse, first race at 12.15pm.

MAY 26 - JULY 4

**'Call and Response' exhibition:** At from out of the blue gallery, Opunake.

MAY 30

**Okato & Districts Historical Society AGM:** 47 Cumming St, Okato, 7pm.

JUNE 11 TO 25

**Mamma Mia:** A production by Hawera Rep. At Hawera Memorial Theatre.

JUNE 12

**Pungarehu Community Society AGM:** Pungarehu Hall, 11.30am

JUNE 15

**NZ National Party public meeting:** Te Kiri Hall, 11am-2pm.

JUNE 23-26, JUNE 30-JULY 3

**Opunake Players present 'Stiff'**

90 Tasman St, Opunake - Ph: 06 761 8550

Arty Tarts

Genuine Home Cooked Food, Pies, Savouries, Fresh Scones, Muffins, Cakes, Slices and Sandwiches. All Day Breakfast Open 6am - 4pm Open 7 Days a week




**LIVING AWAY FROM OPUNAKE BUT WANT TO KEEP UP WITH WHAT'S GOING ON?**  
Subscribe to the Opunake & Coastal News and we'll post you a paper as soon as it's out!  
**06 761 7016**  
**OPUNAKE & COASTAL NEWS**

**TRADES & SERVICES**



**Heartland Construction Ltd**  
**Builders**  
Contact Phill - 027 236 7129

**P.D. FLEMING LOGGING LTD**  
Forestry rigged & certified 33 ton loader,  
National Certificates in Forest Operations,  
Health & Safety approved. Free assessment on  
what your trees are worth \$\$\$  
Ph: Paul  
027 630 9922 or email: paulflems@gmail.com

**CARPETS** second hand,  
large selection After Disaster  
Ltd 223 Devon St West, NP.  
Phone (06) 769 9265

**McNEIL DECORATING**  
- for all your painting  
and decorating. Ph: Jason  
McNeil 027 233 4584.

**HCL BUILDERS** for  
building decks. Ph 027 236  
7129.

**HCL BUILDERS** for all  
kitchens. Ph 027 236 7129.

**FOR SALE**

**VIRULENT VIRUSES** have threatened human health from ancient to modern times. Medicinal plants used in previous epidemics such as Echinacea, Olive leaf, Angelica, Thyme, will help support your immune system. At the health shop Centre City, 06758773

**DO YOU HAVE** trouble swallowing pills? We now have yummy Gummies, multivitamin, apple cider vinegar, ashwagandha for stress and magnesium etc. Come on in for a free sample. At the Health Shop, Centre City. 06 758 7553.

**WANTED TO BUY**

**SCRAP METAL** - for all scrap metal Taranaki wide, give us a call. Molten Metals (06) 751 5367. www.moltenmetals.co.nz

**ARE YOU** getting enough sunshine?!!! If you are feeling down, achy, no energy - you may need Vitamin D. Call into the Health Shop Centre City for more info. 06 758 7553.

**CHURCH NOTICES**

**Opunake Co-operating Parish**

Havelock Street, Opunake - St Pauls - 9.30am every Sunday  
Rahotu - Wesley - 11am first Sunday of the month

**Okato Co-operating Parish**

Okato - St Pauls - 10.00am, 1st and 3rd Sundays each month

Oakura - St James - Prayer Meeting, 7.30pm, first Wednesday of each month.

Okato - St Paul's - Prayer Meeting, 7.30pm, first Thursday of each month

**Opunake Catholic Church**

St Martins, Pungarehu: 8.30am every 2nd and 4th Sundays of the month

Our Lady Star of the Sea, Opunake: 10am every Sunday  
Other areas

Manaia - Sacred Heart - 1st, 3rd Sat at 5pm  
(2nd, 4th & 5th Sat at Hawera's St Josephs)

Kaponga - St Patricks, Sunday 8.45am  
All welcome

**St Patricks Catholic Church, Okato**

Saturday Vigil 6.00pm - 1st, 3rd & 5th Saturdays

**The Wave**

Pentecostal Church 64 Domett St, Opunake

Sunday Services 10.30am

Women's Group 10am Tuesday

Men's Group 7pm Wednesday

Come along or contact

Belinda Philp

027 935 6191

**St. Barnabas Anglican Church**

141 Tasman St, Opunake

Sunday Services 10am

Communion 2nd, 3rd & 4th Sunday

Prayer & Praise 1st Sunday

Every 5th Sunday all 4 churches gather for

a Combined Service

**Okato Community Church**

Meets 10.30am Sunday at Hempton Hall.

Everyone welcome

**TO LET**



Accounting for the future, today  
23 Napier Street, Opunake

**Office Rooms/ Board Room available**

Long term, short term or casual basis

Building has kitchen facilities, wheelchair access, cleaning services and plenty of parking on Napier Street or at rear of building on King Street.

Inquiries to Clare Moss - Ph 06 278 4169

clare.moss@hughson.co.nz



Call us on

**06 761 7016**

TO SEE HOW THE

**OPUNAKE & COASTAL NEWS**

CAN HELP YOUR ADVERTISING

REACH YOUR

TARGET AUDIENCE



FOR ADVERTISING  
THAT WORKS

OPUNAKE & COASTAL  
**NEWS**

This newspaper is subject to NZ Press Council procedures. A complaint must first be directed in writing within one month of publication to the Opunake & Coastal News email address. If not satisfied with the response, the complaint may be referred to the Press Council, PO Box 10879, The Terrace, Wellington 6143. Or use the online complaint form at www.presscouncil.org.nz. Please include copies of the article and all correspondence with the publication.

**CALL OUR FRIENDLY SALES TEAM AT THE**



OPUNAKE & COASTAL  
**NEWS**

23 Napier St, Opunake

**06 761 7016**

See how our high readership rate  
can work for you

**PUBLIC NOTICES**



**FOURTH RATES INSTALMENT**

Ratepayers are reminded that the last day for payment of the fourth instalment of rates for 2021/2022 without incurring a penalty will be **Wednesday 25 May 2022.**

**WD Crockett**  
Chief Executive

**Okato and District  
Historical Society  
AGM**

Monday 30th May, 7pm  
47 Cumming St, Okato  
New members welcome

Correspondence to  
okatoahs@gmail.com

**Pungarehu Community  
Society Incorporated  
AGM**

Election of committee  
June 12, 11.30am  
Pungarehu Hall, SH45  
All welcome

**TENDER - WAREA DOMAIN**

The Warea Recreational Reserve board offers by tender the lease of 6.0702 hectares of grazing land situated on Surf Highway 45 at Warea.

**Term of Lease:**

3 years from 1st July 2022 to 30th June 2025

Copies of the lease available from:

Warea Domain Board Secretary

Marty Brophy, Phone: 06 752 1158

email: hawkesbury@xtra.co.nz

Tenders close Friday June 10th at 5pm

**SITUATIONS VACANT**

Kaupokonui Beach Society

'Beach Camp Manager'

Contract position commencing 1 July 2022

The Camp Manager is responsible for managing the site including reservations, day-to-day management, and minor maintenance of the camp and facilities.

The position would suit a retired couple who are active and enjoy a beach lifestyle. You would also be responsible for running the camp shop as your own 'independent' business opportunity.

The remuneration package includes accommodation, power, internet, and telephone.

**Are You:**

- Proficient in Excel, Word & Facebook?
- Family friendly, community focused and and enjoy meeting new people?
- Handy, innovative with a 'can do' positive attitude?
- Able to work with a committee to 'grow the business'.

**Applications Close 9 June 2022**

Resumes to - Attention: Secretary  
email: kaupokonuibeach@gmail.com



The Opunake & Coastal News is distributed free to every home and business within the rural area, bounded in the north by the New Plymouth City border, extending east to Egmont Village and around to the edge of Stratford, south to the border of Hawera township and inland to Kaponga and through Eltham.

THE NEWSPAPER  
TARANAKI  
LIKES BEST



# meritcars

## with distinction

VISIT WEBSITE MERITCARS.CO.NZ

493 DEVON STREET EAST, STRANDON, NEW PLYMOUTH  
CALL US TODAY 06 281 1925

ALL ON ROAD COSTS INCLUDED PLUS TANK OF FUEL. ONE STOP SHOP FOR FINANCE, WARRANTIES & FREE SMILES

### 2014-2017 NISSAN X-TRAIL ST 7 SEATER NZ NEW

2.5, Tiptronic Auto, Daytime Running Lights, Auto Lights, Driving Lights, Cruise Control, Multi Airbags, Air Con, Stereo with USB, Smart Key With Push Button Start, ABS Brakes, Stability Control, Reverse Camera, Electric Windows, Electric Mirrors, Rear Spoiler. LOW KM

3 FROM **ONLY \$21995**



08 Xtrail \$10995

### 2010 HYUNDAI i45 2.0 A6 NZ NEW

DOHC 16V Engine, Tiptronic Automatic, Stability Control, ABS Brakes, Multi Airbags inc Side Curtain, Electric Windows, Remote Central Locking, Stereo with USB & Aux, Cruise Control, Reverse Camera, Air Con, Alloy Wheels.

**ONLY \$10,995**



### 2010 NISSAN MURANO 250XV

VERY SMART & POPULAR HIGRADE SUV  
Auto, CD Player/Reversing Camera/Side Camera, Bluetooth Phone, Climate Control Air Con, Leather Trim, Cruise Control, ABS Brakes, Air Bags, Electronic Stability Control, Driving Lights, Keyless Entry & Operation, Tinted Windows, Auto Lights, Dual Sunroof, Alloy Wheels, 80km

**\$16,995**



### 2010 MAZDA 3 SP25 AUTO NZ NEW

POPULAR NZ NEW SPORTSHATCH  
NZ NEW, Tiptronic Auto, ABS Brakes, Multi Airbags inc Side, Driving Lights, Electronic Stability Control, Cruise Control, Dual Climate Control Air Con, Electric Windows, Alloys.

**ONLY \$10,995**



07-09 AXELA SPORTS 2.0, TWO FROM \$8995

### 2008 HONDA ELYSION VG 8 SEATER

Beautiful Hi Spec Example. Auto, QuadCam, 24 Valve, Vtec, V6, Alloy Wheels, 8 Seater. Bodykit, Headphone Sets for Rear Passengers. 74km

**NOW ONLY \$11,995**



**WE ARE YOUR ONE STOP SHOP FOR QUALITY VEHICLES FINANCE AND INSURANCE FROM ZERO DEPOSIT AND ALL ON ROAD COSTS INCLUDED IN PRICE THIS WEEKS SPECIAL**

### 2018 HOLDEN CAPTIVA LS EQUIPE 2.4P 7 SEATER: NEW 7 SEATER SUV

NZ NEW, Tiptronic Automatic, Stability Control, Multi Airbags, ABS Brakes, Cruise Control, Stereo With B/Tooth USB & AUX, Electric Sunroof, Keyless Entry & Start, Front & Rear Aircon, Daytime Running Lights, Driving Lights, Auto Lights, Alloys, Leather Trim, Electric Drivers Seat Adjust, Electric Windows, 7 Seater, Reverse Camera & rear Parking Sonar. 62KM



**ONLY \$25,995**

### 2012 SUBARU IMPREZA SPORTS 1.6

Very Popular SPORTY HATCH Low Kms  
Automatic, ABS Brakes, Air Conditioning, Dual Airbags, Driving Lights, Reversing Camera, Four Wheel Disc Brakes, Power Windows & Mirrors, Electronic Stability Control, Keyless Entry with Push Button Start, Tinted Windows, Alloy Wheels. 75km



**\$12,995**

### 2006 HONDA ODYSSEY ABSOLUTE

2.4 Automatic, Climate Aircon, Cruise Control, ABS Brakes, Dual Airbags, Partial Leather Trim, Driving Lights, Tinted Windows, Alloy Wheels 131km.

**ONLY \$5,995**



### 2009 MAZDA ATENZA SPORTSHATCH 25S

Tiptronic Auto, Stability Control, ABS Brakes, Multiple Airbags, Dual Climate AirCon, Cruise Control, Keyless Operation With Remote Central Locking, Auto lights, Auto Wipers, Alloy Wheels, Rear Spoiler, Tinted Windows, Stereo inc BOSE BASE AMPLIFIER., 69KMS;

**ONLY \$13995**



### 2005 & 2004 TOYOTA ESTIMA G EDITION 8 SEATERS:

2.4 Automatic, 8 Seater, Power Windows, Remote Central Locking, Air Bags, ABS Brakes, Climate Control Air Con, Electric Opening Side Doors, ABS Brakes, Driving Lights, Alloy Wheels, Cruise Control. Low Kms. 2 to choose

**FROM \$7995**



1 SOLD

### 2011 SUBARU EXIGA 7 SEATER

2.0 Tiptronic Auto, Remote Central Locking, Driving Lights, Electronic Stability Control, Rear Spoiler, Tinted Windows.

**40KM ONLY \$10,995**



### 2016 NISSAN NOTE X Low KMS

CLEAN CAR REBATE OF \$954.90 APPLIES ASK FOR DETAILS. Auto, Power Steering, Power Windows & Mirrors, Central Locking/Remote Locking With Keyless Operation, Air Conditioning, ABS Brakes, Air Bags, Electronic Stability Control, Lane Departure and Collision Warning System. 60km

**ONLY \$12,995**



### 2010 SUZUKI SX4 GLX SPORT

**LOW KMS NZ NEW**

Automatic, Power Steering, Power Windows & Mirrors, Remote Central Locking, ABS Brakes, Air Bags, Alloy Wheels, 86km

**ONLY \$11,995**



VEHICLES ARRIVING DAILY - SEE ONSITE SPECIALS FROM \$1500  
VISIT MERITCARS.CO.NZ

**GRAB A BARGAIN**



## LOCALLY OWNED & OPERATED

Ph 06 281 1925 • Chris Elliot 027 471 5972

Ph 06 757 3585 • Paul Butler 027 449 5382